

# The Friend

October 2015

*Come as you are to Worship, Wonder, and Work in Jesus' name!*

## ***Our Story*** by Pastor Mollie Dvorak

As we are now a month into *The Story* it has been so fun to see all the enthusiasm in our congregation. I have loved watching the curiosity and excitement as books have been distributed, new material is presented each week, and we slowly start to unfold more of God's story.

I haven't had a lot of experience where the curriculum becomes the focus in so many aspects of our life together, but it has had such a positive response!

My hopes for *The Story* are for us to engage together, not only as something we study, but to come along side one another and grow in our relationships through the sharing of our stories! There are so many ways for us to reflect, respond, and share in *The Story*, I hope we can all take what is being offered and explore the possibilities!



- ~In worship- the sermon, hymn and prayer of the day
- ~Attending learning hour on Sunday morning
- ~Teaching children and youth the stories during learning hour
- ~Discussion in the car rides home with our families about the story everyone learned about!
- ~Tuesday's together- conversations on each chapter
- ~The quiet time you spend reading *The Story* each week
- ~Journal about the highlights
- ~Reflecting on the themes and how they show up in your story
- ~Inviting others in your life to read *The Story*

My dream for this curriculum is that it will stir up questions, comments, and conversations with many! May it move us to discover how all the vast varieties of our stories are woven together, and a part of God's great story.

We have only just begun...

*~Pastor Mollie*

## ***In this issue***

Associate Pastor	1
Hail Damage Report	2
Holiday Market	2
Children Ministries	3
Trunks-n-Treats	3
<55 Group	3
Letter from Nigeria	4
Donation Update	4
55+ November Outing	4
Heritage Committee	5
SPDR Trip News	5
Budget vs. Actual	5
President's Column	6
Book Fair	6
Life Events	7
Endowment Fund	7
Columbarium	7
Youth Ministries	8
State Fair Blue Ribbon	8
October Calendar	9
<i>The Friend</i> Deadline	10
Contact Information	10

*Everyone  
is welcome to  
worship at  
St. Philip's*

## Summer Hail Storm Damages Church



Our church received considerable damage during the June hail storm. This included:

- Damage to the chapel, garage and shed roofs
- Gutters and downspouts were dented
- Two skylights by the Lounge were broken
- HVAC equipment on the roof was damaged
- Six outer panes on sanctuary stained glass windows were broken
- Ten glass globes on parking lot lights were shattered

We have received a settlement from our insurance company and have contracted to have the repairs performed. Work will begin immediately, starting with the replacement of the damaged roofs, and will be scheduled such that they do not impact events at the church. If you have any questions or concerns while the repairs are being made, please communicate them to the church office.

---

### 6th Annual St. Philip's Holiday Market

*~Saturday, November 7, 9:00 am - 3:00 pm*

#### **Attention crafters and vendors!**

Spaces are filling quickly, reserve your space today.

Please pass this information on to others who may have interest.

Application forms and additional information [[www.splcmn.org/holidaymarket](http://www.splcmn.org/holidaymarket)]

---

#### **St. Philip's Crafters!**

Do you make handcrafted items that you would like to donate? St. Philip's hosts a table selling donated crafts. If you'd like to donate your craft to the St. Philip's table please leave donations in the church office, clearly marked with your name and contact information, before October 30. We've found, over the years, inexpensive unique articles sell best. We set up on Friday, November 6 and need many workers on Friday and Saturday. Proceeds are given to Parish Fellowship, the hosting committee. Questions? Contact Becky Becker 763.913.4059 or Joan Kruse 612.251.3908

#### **Attention shoppers!**

During the Holiday Market, Fellowship Hall at St. Philip's will be filled with vendors and crafters displaying a wide variety of unique and interesting items. This annual event offers shoppers a one-stop-shopping opportunity. Invite your friends and plan to attend this fun annual event! Lunch and yummy treats will also be available for purchase!

Proceeds benefit projects at St Philips.

**See you there!**



## Salutations! *Amy Morphew, Director of Children & Family Ministries*

Greetings! My name is Amy Morphew and I am excited to join you at St. Philip's as your Director of Children & Family Ministries. I live in Shoreview and grew up in New Brighton.

I am married with three children. My husband, Jim works for Ecolab in Eagan. My oldest daughter Abby is in seventh grade at Chippewa Middle School. My other two children, Grace, third grade, and Aaron, first grade, are at Turtle Lake Elementary School in Shoreview. I enjoy photography, being with my husband and children, and going on adventures. I have a passion for working with children and helping them grow in their faith walk.

I look forward to meeting and partnering with you!

*~Amy*



### *Trunks-n-Treats*



Halloween is upon us! St. Philip's will again offer the opportunity for our members and neighbors to enjoy a safe and convenient trick-or-treating experience right here at church. This October 31, St. Philip's members and friends will decorate the trunks of their cars and tailgates of their trucks in Halloween fashion. Vehicles will park in the church lot, where kids will be able to trick-or-treat from car to car.

Please join us for this year's Trunks-n-Treats on Saturday, October 31 from 5:30-7:30 pm. Contact Sue Davis for information at 763-784-9318. Invite any children who might enjoy attending this event. We hope to see you there.

### **NEW at St. Philip's the <55 Group**

If you've envied (admit it) all the cool things the 55+ group has done but you're not quite that vintage yet, fear no more! We now have a **Less Than 55 Group**! Our first event is dinner at Nye's and a 90-minute "Real Ghost Tour" on Friday evening, October 23. Meet at the church parking lot at 5:30 pm. We'll carpool to St. Anthony Main in Minneapolis, have dinner at Nye's Polonaise Room, and then a **Real Ghost Tour** along the Historic Mississippi River. Total walking is 1/2 mile. Ghosts are not guaranteed to show up but we'll have fun nonetheless!



Cost of the tour is \$30 per person including transportation, dinner paid individually. Adults less than 55 years old, members and non-members are welcome. Sign up in the Church Office, 25 person limit. Questions [AmadaM@splcmn.org]

[www.realghosttour.com](http://www.realghosttour.com)

[www.nyepolonaise.com](http://www.nyepolonaise.com)

## A "Thank You" message from Nigeria

~emailed to members of St. Philip's, received August 11, 2015

May the Lord

keep watch

between

you and me

when we

are away

from each other.

~Genesis 31:49

Dear Friends,

My family and I would like to thank you for standing by us in different ways. Thank you for the love you have shown us after the loss of our mother, grandmother, great grandmother who died on August 1, 2015 around 4 am Nigerian time at the age of 92 years. No words can express our gratitude towards what you have done, may God continue to bless you. Once again, we thank you for all your prayers, support and donations.

Many of you have also heard about my sickness a week before my mother's death and you have sent words of prayers and encouragement. We deeply appreciate you surrounding us with your words of prayers and support all along.

We have been away to Dingai for the burial and came back to another overwhelming support at the Seminary and all over. For the past three days many, many people have been trooping into our house for condolence and prayers. We say thank you.

Please accept our belated appreciation for all that you have done to journey with us through this period of grieving and recovery.

~Sekenwa family

---

## Annual Donation Update *cell phones, eye glasses, hearing aides & personal items*

Your donations are very much appreciated by various organizations. This past year, St. Philip's has donated:

277 pair of glasses + cases

138 cell phones + accessories

240 lbs. of personal items and the newly added

8 hearing aides

*No-one has  
ever become  
poor by giving.*

~Anne Frank

Your gifts can be deposited in a marked box in the office. Thank you very much!!

~Carol Baumgartner

---

## St. Philip's 55+ Retirees



Join us for a delightful and entertaining evening at the Fridley High School. Meet in the cafeteria, on Thursday, November 19 by 5:30 p.m. We will have dinner prior to the play; then walk down the hall to the Auditorium to view "Hairspray". The story takes place in 1962, when Tracy Turnblad and her best friend audition to be on The Corny Collins Show. As you may expect, it soon turns to chaos when she plans to teach Baltimore a thing or two about integration.

The cost is \$15 per person, includes dinner and the play. Sign up in the church office starts October 15 and ends on Sunday, November 1. Payable with a non-refundable check payable to St. Philip's.

This is a good time to invite and treat a friend! If you have any questions, contact Tom or Marlene Schonebaum at 763-786-2483.

## Heritage Committee *How do you define "Heritage"?*

My Webster's dictionary defines "Heritage" as "something transmitted by or acquired from a predecessor", or "property that descends to an heir". Who cares? St. Philip's newly formed Heritage Committee does. The Heritage Committee was formed after a visit with Normandale Lutheran Church members who shared their information concerning the process to capture relevant heritage material to build our archive. Capturing heritage material and storing that material in an organized fashion succeeds in retaining valuable information about our church. At the same time, that archive can be provided to the ELCA.

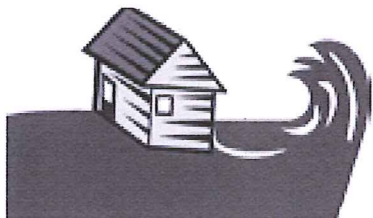
The ELCA, Region 3, is developing archives containing the historical records of the nine synods in Region 3. These records, as developed, are stored and made available for use at Luther Seminary in St Paul, Minnesota. Our St Philip's archive, when completed, can be accessed by church members through the Heritage Committee.

Our committee members are currently scouring many church files prior to assembling an archive that will tell the tale of St. Philip's birth, growth, and missions past, present, and future. In addition we will likely seek recollections from long-term members for assistance in retrieving information unavailable elsewhere. Readers of the Friend are urged to present to the committee any relevant material (e.g., articles, photos, etc.) to which they're aware that should be retained in our archive.

*The Heritage Committee acts as a subcommittee to the Evangelism Committee.*

*Members are Jeannine Arcand, Richard Lekang, Arlene Hamernik, Grace Kurtz, Thelma Nash, Ron Seekamp, and Marlin Sorum.*

*~A people without the knowledge of their past, origin & culture is like a tree with no roots.~*



## St. Philip's Disaster Relief

*Hi-Ho, Hi-Ho! It's off to camp we go!*

It's off to camp for 29 SPDR team members. Buckhorn Summer Camp and Retreat Center - a camping ministry of the Rocky Mountain Conference of the United Methodist Church located atop Rist Canyon and above Fort Collins - will be their home for a week on the third Colorado trip from September 26 through October 4.

While in Colorado, team members will be working on two remote homes that were damaged by the 2012 High Park fire or the 2013 Front Range flooding. Due to their locations, they've received little volunteer help. Team members also plan to do some reconstruction work at Buckhorn Camp that was damaged by the fire and gather willow shoots to be used to reclaim flooded river banks on either the Little Thompson or the Big Thompson River.

Watch for posts to the SPDR website at [www.splcmn.org/spdr](http://www.splcmn.org/spdr) and also on the SPDR Facebook page. Search for St. Philip's Disaster Relief if you have a Facebook account or access it from the SPDR website if you don't.

Note - Internet access while at the camp may be limited so posts might not be daily.

*The journey continues...to Colorado.*

### St. Philip's August 2015

Income  
Expense  
TOTALS

### Budget YTD

\$512,767  
(\$538,767)  
(\$26,001)

### Actual YTD

\$525,260  
(\$524,078)  
\$1,182

## President's Column *Ron Ackerman*

The Fair is over, the kids are back in school, and our long awaited summer is almost history. It is time to move into the next season. St. Philip's has the same calendar. Fall is upon us, Sunday School is starting and a new church year is beginning. An exciting new program *The Story* is the theme for the upcoming year.

I started reading *The Story*. It is much easier to read and understand than trying to read the Bible and keep track of the various biblical characters and their relationship to one another. *The Story* is based on the New International Version (NIV) Biblical Text. *The Story* also lists the characters in chronological sequence as well as specific references to the actual text in the Bible. There are time lines showing events to put these into perspective.

Looking back to my confirmation days, the only thing I remember is having to memorize the books of the Bible by name in the proper sequence. Other than some obvious books, we had no idea what was in each book, let alone the purpose and relationship. *The Story* puts the events in Laymen Terms easy to understand. This type of book is much needed and it is hard to believe it was never developed before 2005. If you haven't purchased *The Story* yet, copies are available at the church or in the narthex on Sundays.

St. Philip's is finally at full staff! We have all the various leaders in place. This is the first time in a long time where we have a stable environment. It is great that everything is coming together at the beginning of the new Church Season. Amy Morpew has joined the staff in the position of Director of Children and Family Ministries. She started September 1, and is already moving forward with the Sunday School program.

The Columbarium Committee has been receiving very positive feedback from St. Philip's members. The number of people who have reserved a niche is approaching 20. We are trying to get started with some of the landscaping before winter arrives. Information and Columbarium Committee members are present in the narthex during the Sunday services.

The Disaster Relief Team will be having their 51st trip scheduled September 26, through October 4. This trip will be going to Colorado to help with some homes damaged by flooding and fire in 2012 and 2013. Check with Mike Anderson or Renee Johnson for details.

Based on all that is happening, we are looking forward to another great year at St. Philip's!

*While  
the earth  
remains,  
  
seedtime and  
harvest,  
  
cold and heat,  
  
summer  
and winter,  
  
day and night,  
  
shall not  
cease."*

~Genesis 8:22

## St. Philip's Annual Book Fair



*You can't buy  
happiness  
but you can buy  
books,  
and that's kind of  
the same thing.*

St. Philip's annual book fair is coming up soon. It will be held on Saturday, November 21, and Sunday, November 22. The Library Committee sponsors this once-a-year fundraiser to purchase new books, materials and supplies for the church library.

This is your opportunity to purchase books as gifts for family, friends, and yourself. Books come from The Red Balloon Bookshop in St. Paul. All the books are selected by members of the Library Committee with help from the staff at The Red Balloon. There are books for all ages, babies through adults, and cover a wide range of interests. During the sale members of the Library Committee will be available to offer recommendations and suggestions.

If there is a certain title you would like to see offered, please let Judy Simko [jukasim@comcast.net] or Grace Kurtz [gkurtz61@gmail.com] know. You may also leave a note in the library or church office.

Because this is an occasional sale, there is no sales tax.

## Life Events

### *October Anniversaries:*

Eric & Angela Jensen on 10/2/1999 for 16 years  
Michael & Lori Larson on 10/2/1993 for 22 years  
Don & Val Habig on 10/4/1975 for 40 years  
James & Lori Manecke on 10/4/1986 for 29 years  
Tom & Daryl Monjeau on 10/5/1985 for 30 years  
Rikard & Amy Nordlander on 10/5/1996 for 19 years  
Adam & Anne Schweizer on 10/5/2013 for 2 years  
Marilyn & Lynn Swanson on 10/6/1997 for 18 years  
Jack & Michelle Angerhofer on 10/7/1989 for 26 years  
Gregory & Wendy Hundt on 10/7/1995 for 20 years  
Don & Sue Palmer Jr. on 10/7/2005 for 10 years  
Arthur & Bonita DeMeyere on 10/8/1960 for 55 years  
Michael & Alyce Lentz on 10/8/1994 for 21 years  
George & Cheryl Mills on 10/8/1977 for 38 years  
Christopher & Laurie Nelson on 10/8/1994 for 21 years  
Lonnie & Marsha LeClair on 10/9/1976 for 39 years  
Richard & Betty Nordling on 10/11/1958 for 57 years  
David & Nelly Haugen on 10/12/2002 for 13 years  
Don & Jan Nelson on 10/14/1989 for 26 years  
Mark & Deb Williamson on 10/15/1989 for 26 years  
Kenneth & Pamela Yell on 10/15/2005 for 10 years  
John & Jennifer Gerdes on 10/17/1998 for 17 years  
Nathan & Julie Jeppson on 10/17/1998 for 17 years  
Chris & Janice Miller on 10/19/1984 for 31 years  
Richard & Bette Blair on 10/20/1962 for 53 years  
Todd & LeeAnn Schellenberg on 10/20/2012 for 3 years  
James & Terry Vaughan on 10/20/1973 for 42 years  
Gary & Linda Morris on 10/21/1967 for 48 years  
Mark & Tamara Zroka on 10/21/1978 for 37 years  
Michelle & Daniel Gladhill on 10/22/2005 for 10 years  
David & Marilyn Wahlgren on 10/22/1960 for 55 years  
Duane & Arlene Retzer on 10/23/1971 for 44 years  
Michael & Kristy Dettle on 10/25/1986 for 29 years  
John & Marlys Hinsverk on 10/26/1957 for 58 years  
Greg & Debbie Leibfried on 10/26/1991 for 24 years  
Larry & Phyllis Ehlers on 10/28/1962 for 53 years  
Jeffrey & Melissa Loven on 10/29/2005 for 10 years

## The St. Philip's Endowment Fund

**WHO...**

*will tell The Story?*

*minister to those  
in need?*

*share the Gospel?*

**WHY**

**NOT**

**YOU?**

\*\*\*\*\*

### **Memorials**

*In August, gifts were received  
in memory of  
Helen Baker & Howard Olson  
Thank you!*

\*\*\*\*\*

*Gifts of any size, for any reason,  
will grow to support and sustain the  
ministry of St. Philip's in perpetuity.  
Thank you to all who support the St.  
Philip's Endowment Fund.*

\*\*\*\*\*

*For more information on the St. Philip's  
Endowment Fund,  
visit the website at [www.splcmn.org](http://www.splcmn.org),  
or contact Bob Becker, Dana Rebelein,  
Duane Retzer, Ray Olson,  
Howard Thompson, Jennifer Prasek,  
Joan Kruse or Dick Lekang.*



## **Columbarium Ground Breaking!**

We are proud to announce a ground breaking service for the Columbarium.  
Sunday, October 11 immediately following the 8:30 am worship.  
Come join us outside, on the south side of Fellowship Hall.

***Please help us celebrate this exciting event in the history of St. Philip's.***

## Greetings from Sara

*Sara Quarberg, Director of Youth & Young Adult Ministries*

Fall is upon us and all that we've been planning, discerning and waiting for is becoming a reality! Thanks be to God for that! Our new program year of ministry is underway for both our youth and young adult ministry. This summer, our young adult ministry has kicked off. We had a great time together reconnecting at our kickoff night at La Casita in August. Our young adults will be collaborating with other area churches in young adult ministry with once-per-month dinners and conversation at area restaurants. September brought us to Pickle Park together with other young adults from the area. Please continue to keep this ministry in your prayers as God continues to lead us together!

Our youth ministry is underway in our new models of Confirmation and High school Peer Ministry. October brings us another opportunity to participate in Cardboard Box City at the State Fairgrounds. This event allows our youth to experience a glimpse of homelessness for a night by sleeping outside in cardboard boxes. The night is packed full of worship opportunities and fun! Join us for Cardboard box city on October 15 and 16! This month we will also join our 10th grade class in their Affirmation of Baptism service on October 25 at the 10:30 am service! This is an exciting step in the faith-lives of our young people and also in the life of this community. We remember through our baptism that we are a part of a community who welcomes us, loves us, carries us, equips us and nurtures us in our faith. How beautiful is it that we get to be a part of that?!

Our High school youth are settling into their new ministry model of Peer Ministry. We are grateful for this opportunity to grow together as friends, partners in ministry and as a part of this community. As always, we welcome any adults who would like to be a part of ministry with young people in any way! Please continue to pray for the ministries of the young people of St. Philip's. We are thrilled to be on this journey as God continues to lead and the Holy Spirit continues to move within us!

Blessings and peace,

~Sara



## *St. Philip's State Fair Blue Ribbon Winner! Lindsey Anderson*

Lindsey Anderson, 10th grader at Blaine High school, won first place for her self-portrait at the 2015 Minnesota State Fair. Lindsey is the daughter of Dan and Lauri Anderson and will be confirmed this year. She is a fantastic addition to our High school ministry here at St. Philip's.

*Congratulations on this accomplishment, Lindsey!  
It's so wonderful to see you  
using your gifts in this way!*



SUNDAY	MONDAY	TUESDAY	WEDNESDAY	THURSDAY	FRIDAY	SATURDAY
				<b>1</b> <b>7:00 am</b> Men's Book Discussion <b>1:00 pm</b> Lunch Bunch <b>6:30 pm</b> Bells of Praise <b>7:00 pm</b> Recovery International <b>7:30 pm</b> AA and Alanon	<b>2</b> <b>Disaster Relief Team</b> <b>Trip to Colorado</b>  <b>1:00 pm</b> EA Group <b>6:00 pm</b> Women's GA	<b>3</b> <b>5:00 pm</b> Saturday Evening Worship
<b>4</b> <b>8:30 am</b> Worship <b>9:30 am</b> Confirmation/HS Hour Adult Forum: <i>The Story</i> <b>10:30 am</b> Worship <b>12:00 am</b> 10th Grade Conf. Class	<b>5</b> <i>The Friend Article</i> <b>Deadline</b> <b>1:00 pm</b> Joy Circle <b>1:30 pm</b> Chair Yoga Genealogy Small Group <b>6:00 pm</b> Yoga Worship Band <b>7:00 pm</b> GA Gamanon Befrienders	<b>6</b> <b>9:45 am</b> Staff Mtg <b>1:00 pm</b> Tuesdays Together <b>5:00 pm</b> Solid Ground AA	<b>7</b> <b>8:30 am</b> Men's Work Crew & WOW <b>9:00 am</b> Quilters <b>10:00 am</b> EA Group <b>6:30 pm</b> Confirmation Sm. Group <b>7:00 pm</b> Sanctuary Choir	<b>8</b> <b>8:45 am</b> 55+ Arboretum Tour <b>6:30 pm</b> Bells of Praise <b>7:00 pm</b> Recovery International <b>7:30 pm</b> AA Alanon	<b>9</b> <b>1:00 pm</b> EA Group <b>6:00 pm</b> Women's GA	<b>10</b> <b>5:00 pm</b> Saturday Evening Worship <b>6:00 pm</b> Saturday Supper
<b>11</b> <b>8:30 am</b> Worship <b>9:20 am</b> Columbarium Ground Breaking <b>9:30 am</b> Confirmation/HS Hour Adult Forum: <i>The Story</i> <b>10:30 am</b> Worship	<b>12</b> <b>9:00 am</b> Glory Circle <b>1:00 pm</b> Prayer Group <b>2:00 pm</b> Lynwood Bingo <b>6:00 pm</b> Worship Band Yoga HR Committee Mtg <b>7:00 pm</b> GA Gamanon	<b>13</b> <b>9:45 am</b> Staff Mtg <b>1:00 pm</b> Tues Together <b>5:00 pm</b> Solid Ground AA <b>6:30 pm</b> Garden Mtg Property & Grounds Mtg Parish Fellowship Mtg	<b>14</b> <b>8:30 am</b> Men's Work Crew & WOW <b>10:00 am</b> EA Group Women's Book Club <b>6:30 pm</b> Confirmation Sm. Group <b>7:00 pm</b> Sanctuary Choir Evangelism Mtg	<b>15</b> <b>7:00 am</b> Men's Book Discussion <b>6:30 pm</b> Bells of Praise <b>7:00 pm</b> Recovery International <b>7:30 pm</b> AA Alanon <b>Cardboard Box City</b>	<b>16</b> <b>1:00 pm</b> EA Group <b>6:00 pm</b> Women's GA	<b>17</b> <b>9:00 am</b> Comfort & Joy of Quilting <b>5:00 pm</b> Saturday Evening Worship
<b>18</b> <b>8:30 am</b> Worship <b>9:30 am</b> Equal Exchange Coffee Confirmation/HS Hour Adult Forum: <i>The Story</i> <b>10:30 am</b> Worship	<b>19</b> <b>1:30 pm</b> Genealogy Sm. Group Chair Yoga <b>6:00 pm</b> Worship Band 10th Grade Banquet & Rehearsal <b>7:00 pm</b> Gamanon GA	<b>20</b> <b>8:30 am</b> Assemble <i>The FRIEND</i> <b>9:00 am</b> Library Mtg <b>9:45 am</b> Staff Mtg <b>1:00 pm</b> Tues. Together <b>2:30 pm</b> Heritage Mtg <b>5:00 pm</b> Solid Ground AA	<b>21</b> <b>8:30 am</b> Men's Work Crew & WOW <b>9:00 am</b> Quilters <b>10:00 am</b> EA Group <b>6:30 pm</b> Confirmation Sm. Group <b>7:00 pm</b> Sanctuary Choir	<b>22</b> <b>1:00 pm</b> Woman's Book Club <b>6:30 pm</b> Bells of Praise <b>7:00 pm</b> Recovery International <b>7:30 pm</b> AA Alanon	<b>23</b> <b>1:00 pm</b> EA Group <b>6:00 pm</b> Women's GA	<b>24</b> <b>5:00 pm</b> Saturday Evening Worship
<b>25</b> <b>8:30 am</b> Worship <b>9:30 am</b> Confirmation/HS Hour Adult Forum: <i>The Story</i> <b>10:30 am</b> Worship	<b>26</b> <b>1:30 pm</b> Knitters and Crocheters <b>1:30 pm</b> Chair Yoga <b>6:00 pm</b> Worship Band Yoga Girl Scouts Mtg <b>7:00 pm</b> GA; Gamanon	<b>27</b> <b>9:45 am</b> Staff Mtg <b>1:00 pm</b> Tuesdays Together <b>5:30 pm</b> Solid Ground AA <b>6:45 pm</b> Board Mtg	<b>28</b> <b>8:30 am</b> Men's Work Crew & WOW <b>10:00 am</b> EA Group <b>2:00 pm</b> Global Missions Mtg <b>6:30 pm</b> Confirmation Sm. Group <b>7:00 pm</b> Sanctuary Choir	<b>29</b> <b>7:00 pm</b> Recovery International <b>7:30 pm</b> AA Alanon	<b>30</b> <b>1:00 pm</b> EA Group <b>6:00 pm</b> Women's GA	<b>31</b> <b>5:00 pm</b> Saturday Evening Worship <b>5:30 pm</b> Trunks-n-Treats 



6180 Highway 65 NE  
Fridley, MN 55432-5158

ADDRESS SERVICE REQUESTED

NON-PROFIT ORG.  
U.S. Postage PAID  
TWIN CITIES, MN  
PERMIT # 2705

place label here

## St. Philip's Lutheran Church

*A member of the ELCA*

www.splcmn.org • info@splcmn.org

Phone: 763-571-1500 • Fax: 763-572-2292

### Church Staff

**Joel Wight Hoogheem**, Senior Pastor

JoelWH@splcmn.org, ext. 112

**Mollie Dvorak**, Associate Pastor

MollieD@splcmn.org, ext. 110

**Jeannine Arcand**, Office Manager

JeannineA@splcmn.org, ext. 104

**Amada Marquez**, Publications and Membership Coordinator

AmadaM@splcmn.org, ext. 101

**Sara Quarberg**, Director of Youth & Young Adult Ministries

SaraQ@splcmn.org, ext. 108

**Amy Morphew**, Director of Children & Family Ministries

AmyM@splcmn.org, ext. 107

**Eva Jensen**, Visitation Ministry Leader

EvaJ@splcmn.org

**Emily Thomas**, Worship Band Director

EmilyT@splcmn.org, ext. 106

**Stephanie Phelps Johnson**, Sanctuary Choir Director

StephanieP@splcmn.org, ext. 106

**David Geslin**, Organist

DavidG@splcmn.org

**Jerry Salitros**, Bookkeeper

JerryS@splcmn.org, ext. 103

**Katie Swenstad**, Full-Time Custodian

KatieS@splcmn.org, ext. 109

**Michelle Hill**, PT Custodian

### Board of Administration

BOA@splcmn.org

**Ron Ackerman**, President

ron.ackerman@comcast.net

**Mike Youngberg**, Vice President

zubazwizard@gmail.com

**Howard Thompson**, Treasurer

howard\_thompson@comcast.net

**Angela Anderson**, Secretary

bargela@msn.com

**Gary Blomster**

garyblomster@comcast.net

**Phyllis Ehlers**

lpehlers@gmail.com

**Dawn Hansen**

dawng48@hotmail.com

**Brad Heitland**

heitland@gmail.com

**Kathy Pullen**

kathyfpullen@gmail.com

**Val Sperry**

sperryvs@aol.com

**Missionaries: Jim & Carol Sack**

**Companion Congregation: Bille Lutheran in Nigeria**

**Ministers: All members of the Parish**

**The Friend deadline:**

5th of the prior month

E-mail typed copy (250 word max) to: **AmadaM@splcmn.org**