

# The Friend

December 2016

*Come as you are to Worship, Wonder, and Work in Jesus' name!*

## There's Always Room *by Pastor Joel Hoogheem*

Luke 2:7 says, "There was no place for them in the inn." In Luke 22:11, Jesus says, "Where is the guest room, where I may eat the Passover with my disciples?"

On the surface, these may seem to be unrelated passages, other than they're both about Jesus. The connection, however, is that the same Greek word (kataluma) gets used to describe the place mentioned in both texts. I've never heard anyone suggest that Jesus hosted the Last Supper in a hotel. Further, both archaeology and cultural customs have shown that Bethlehem had no hotel.

In the story of Jesus' birth, the reality is not that the Holiday Inn, Red Roof Inn, and Motel 6 were all booked. On the contrary, the guest room in the home of Joseph's family in Bethlehem was already occupied. Mary and Joseph weren't booted out and left to fend for themselves in a drafty stable. That would have been completely unthinkable according to Middle Eastern hospitality.

Instead, Mary and Joseph were welcomed among all the rest of Joseph's extended family in the main living space – which was on a raised platform, up from where the animals stayed during the night. Troughs – or mangers – separated the two spaces as the animals stayed on a lower level in the main dwelling place both to be protected from robbers and to provide warmth for the house. The guest room was full, but there was always room for more in the home.

Although tradition and countless Christmas pageants have placed Mary and Joseph alone in a far-off stable, the reality is that they were surrounded by the hustle and bustle of family members and activity when it came time for Jesus to be born.

In much the same way, so many of our households will be filled with the hustle and bustle of people and activities as we celebrate this Christmas. And, just as it happened in Bethlehem, so it will happen in our homes: Jesus will come among us and our hustle and bustle. To me, that's the most remarkable part of Christmas: that in Jesus Christ, God comes to us, among our family and friends, to save and love and challenge and comfort us. And, just as it was in Bethlehem, I pray that there's always room for Jesus in our homes and lives.



## *In this issue*

Pastor Joel Wight Hoogheem	1
Youth Ministries	2
Global Mission Festival	2
<55 Event: <i>Chili Cook-Off</i>	2
Children Ministries	3
End of the Year Donations	3
Advent Wednesdays	3
Christmas Giving Trees	4
LifeGroups	5
55+ Event: <i>Pie &amp; Music</i>	5
Thank You!	5
President's Column	6
Mortgage Update	6
October Budget	6
SPDR: Lasagna Dinner	6
Life Events	7
Christmas Concert	7
Kinshoppe Event	7
Endowment Fund	7
December Calendar	9
<i>The Friend</i> Deadline	10

In Christ's Love, *Pastor Joel*



## Christmas Reflections

*Sara Quarberg, Director of Youth & Young Adult Ministries*

As we enter into this season of Advent, I've asked some of our youth to share how they experience God's presence during the Christmas season. It's so easy to get wrapped up in buying gifts, baking cookies, cleaning the house, and preparing for all of the season's festivities, that we sometimes forget why we are celebrating and doing all of these things. Here are their reflections:



**What does it mean to you that God came into this world as a child?**

"To me it means that he was meant for greatness and he can help us out and his sacrifice shows he cares about us." – Sibley

"I think it shows that at all ages Jesus was a leader." – Addi

"To me it means that he loves and cares for us." – Grace

"To me it means that God cared a lot about us and our lives. God loves us and shows it by forgiving our sins." – Allison

**What is one way you share God's love at Christmas time?**

"My family sings and reads the Christmas story while playing a game with candy." – Addi

"One way I share God's love at Christmas time is putting up a scene of God and the disciples, animals, etc." – Grace

"At Christmas time, I share God's love by showing my love to friends and family and showing respect." – Allison

**What is one way you experience God's love at Christmas time?**

"At Christmas time, I experience God's love from my friends and family. The joy of God's love is AWESOME." – Allison

"I experience God when I see all my family and we all have fun together." – Sibley

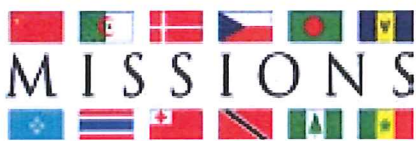
"When we all get together, I feel like God gave us a gift of our family." – Addi

As we continue to journey through this time of waiting, may you feel God's presence throughout this season of Advent. May God bring peace, love, joy, and hope into your lives as we wait for this beautiful Christ child who gives us more than we could ever imagine.

In Christ's love,

*Sibley, Addi, Grace, Allison, and Sara*

## Global Mission Festival January 14 - 15, 2017



St. Philip's annual Global Mission Festival will be January 14 & 15. It will include an update on companion congregation, LCCN Bille, Nigeria and the Mission Offering that supports outreach and education in Bille. More information to come in the January issue of *The Friend*.

## <55 January Event: Chili Cook-Off (*Less Than 55 Years Old*)



Please join the <55 Group (Less than 55 years old) for a chili cook-off in the Lounge on Friday, January 20 at 6:00 pm. Now that the weather is definitely cold; start finessing those recipes! Categories for the chili cook-off are vegetarian, spicy, classic, and unique! Look for more info coming in the January issue of *The Friend*. Register by sending an email with your name and any questions to Amada Márquez [AmadaM@splcmn.org] by January 13.



## Wishing you Peace, Hope and Love this Holiday Season... and Always.

*Connie Yerigan, Director of Children & Family Ministries*

Hello everyone! Please let me introduce myself. My name is Connie Yerigan. To some of you, I am a new face here at St. Philip's for many, I am not. I have been a member here for over 14 years, and for 10 of those years I taught Sunday School. My husband and I were married in this church, our daughters were both baptized here and now, I am beyond grateful and extremely humbled to have been called to this position of Director of Children and Family Ministries.

I am SO excited to be planning and organizing the annual Christmas pageant! It is sure to be great. We have amazing parents who have expressed interest in helping, and the kids are all very excited too! The pageant this year will have humor, songs, and a very important message. A reminder, that Christmas isn't about the gifts, loot and stuff; it's about celebrating Jesus.

I believe that my love for children, my enthusiasm, my respect for the amazing volunteers, and my history with our church and its families will help me to do my job to the best of my abilities. I encourage you to please come to me at any time with questions, comments or concerns. I look forward to seeing you all, around St. Philip's and the community!



## 2016 Contribution Deadline

As the end of the year approaches, please keep in mind the deadline to drop off 2016 contributions is Friday, December 30 by 1:00 pm in the church office. If you prefer to mail in your offering, it must be postmarked no later than Saturday, December 31. Per IRS guidelines, envelopes postmarked after this date will apply to 2017. Stock gifts should be in the works by December 15. Thank you for your generous and faithful donations to St. Philip's Church.

## Advent Wednesdays

Advent, which means "coming" in Latin, is the next church season that is upon us, where we start preparing for the coming of Jesus Christ. Advent is a time that we can feel busy, rushed, and chaotic in all the festivities and traditions. It may be a time we don't want to add more to our plate, but St. Philip's is offering something you probably do not want to miss! You are invited to come celebrate the season of Advent with us.

### Advent Wednesdays

*A time to pause, be present, and prepare together!*

**When are Advent nights?** Wednesdays November 30, December 7, December 14.

**What time on Wednesdays?** 5:45-6:45 pm

**What does an Advent night entail?**

- Dinner in the Fellowship Hall- free will offering
- Advent craft or activity at your table following dinner
- Hymn sing in the sanctuary

**Can I bring friends or family that are not members of St. Philip's?** Absolutely! All are welcome!

Please feel free to contact me with any questions or concerns.

Don't miss out, add Advent Wednesdays to your calendar now, and we look forward to seeing you this Advent season!

In Peace,  
*Pastor Mollie*



## Christmas Giving Trees *An opportunity to Give More & Love All*



The Benevolence Committee will again be sponsoring Christmas Tree giving opportunities. We will have Christmas trees and a gift table displayed in the Narthex beginning Thanksgiving weekend. The requested gifts will be written on ornaments on the trees and at the table.

**CEAP** – Community Emergency Assistance Program

**SACA** – Southern Anoka County Assistance

**Stepping Stone** – Homeless Shelter in Anoka County

**Alexander House** – Emergency Shelter for Domestic and Sexual Abuse

**Linwood Nursing home** – Permanent Residents

**Kinship Program** – Disadvantaged Children & Families

We ask that you prayerfully consider helping these organizations that help so many in our local community.

---

## LifeGroups Testimonials



As the first fall session of LifeGroups has come to an end, I thought it was only right to share what the group member's thought of their LifeGroup experience.

*"LifeGroups were a great way to meet people, connect with old friends and meet new ones."*

*"There were thought-provoking CD's, positive affirmations, and good exchange of stories and opinions."*

*"Best treats! We had popcorn with our 'movie' last night!"*

*"We come together once a week to share our faith, our opinions and thoughts, and our personal journeys. I'm grateful that we've been able to spend this time together growing spiritually and, also, getting to know our fellow St. Philip's members better."*

*"Our LifeGroup members have been so willing to engage in many topics. Everyone feels comfortable, and have opened their hearts to share their life stories."*

*"The series was worthwhile, spoke well to our everyday lives and was very engaging. Everyone chipped in with discussion and by trading off bringing appetizers each week."*

Thank you to all who participated in this new ministry at St. Philip's. And thank you to the planning team and LifeGroup hosts for all your hard work and dedication!

The LifeGroup Fall session was a success so make sure you watch for the sign-up sheet for our winter session which will be for four weeks in January. We will be studying TED Talks and watch four videos on speakers with a specific topics that apply to our everyday lives. You can check out thousands of TED Talks [[ted.com/talks](http://ted.com/talks)].

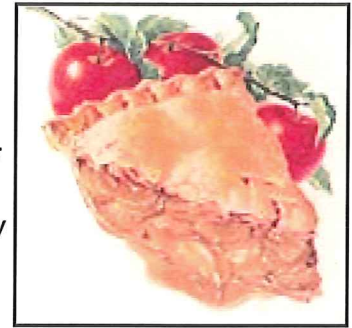
If you are interested in hosting a LifeGroup, please contact Pastor Mollie [[MollieD@splcmn.org](mailto:MollieD@splcmn.org)].





## 55+ Retirees January Event *Pie & Entertainment*

Pie and entertainment, what a way to start the New Year! Meet in Fellowship Hall on Thursday, January 12 at 1:00 pm for a fun and entertaining afternoon. Join us for a musical presentation by a father and son duo. Allen and Matt Carlson share a passion for classic country, gospel, and hymns. They enjoy entertaining while encouraging their audiences with positive, uplifting messages. The cost of \$6 per person includes the entertainment, pie, and coffee. Sign up and pay in the church office by Sunday, January 8. Please make your (non-refundable) check payable to St. Philip's. This is a great time to treat and bring a friend. Any questions, please contact Tom or Marlene Schonebaum [763-786-2483].



## Thank you! *That's One Talented St. Philip's Member!*



Many of you know Spence Minear and his love of woodworking. With this passion of woodworking in mind, the Columbarium Committee asked Spence if he could come up with a simple folding table that would be light weight and easy to move in and out of the church. He immediately began thinking of different designs for a table and came up with a functional design that is beautiful and elegant too. The table is stained to match the wood around the altar area. Spence incorporated a small cross on each leg of the table in a lighter colored stain.

After the table was delivered to the church, Spence offered his talents to make a box that the bronze sheet urns would fit into for viewing during services. He explained his vision to us and we quickly agreed it would be a great asset. The box was delivered in November. It is beautifully made with inlays of a cross on the front and the St. Philip's logo on the top. It is finished to match the table. The bronze sheet urns that we offer for sale fit perfectly into the box with enough room to get it out easily. The box is on display in the church office for the next few weeks before being placed in a secure location for committee access. The Columbarium Committee would like to thank Spence for this wonderful contribution to the ministry of St. Philip's!

## Thank you! *St. Philip's Members*

The Benevolence Committee would like to thank all the volunteers and members of St. Philip's that helped with the Coats for Kids project. We were able to purchase with funds from the Benevolence budget, garage sale, a very generous grant from Wal-Mart, and Thelma Nash's Thrivent Mission account; 119

jackets, 53 snow pants, 20 pairs of boots, 70 Hats (Sewn by St. Philip's Hats & Mitten Makers), and 60 pairs of gloves – all items for boys and girls. This is a special project and we are so thankful and appreciative of the congregational support and prayers for this mission to our local children, who are in desperate need of warm outdoor clothing. Farmer's Almanac predicts a colder than usual winter; so these will be needed!

This is a special project and we are so thankful and appreciative of the congregational support and prayers for this mission to our local children who are in desperate need of warm outdoor clothing. Farmer's Almanac predicts a colder than usual winter so these will be needed!



## President's Column *Mike Youngberg*



As we approach the end of another year, it's time to look back. As a result of generous benefactors, the St. Philip's building mortgage will be retired. People are gathering in LifeGroups. The new Columbarium is in place, and the south side of the campus has been freshly landscaped. The sanctuary has a new sound system. We have a Prayer-ground. We reached out to serve the larger community in so many ways. Another Garage Sale happened. Disaster Relief made trips to Colorado and Missouri. We invited the community to Trunk-or-Treat, and soon there will be Christmas Giving Trees in our hallways. All in all it's been a good year.

It's also time to be thinking ahead to next year and what great things may be in store for St. Philip's in 2017. For those who might be thinking "This is the end of the year, not a time to think about beginnings," remember that it's Advent, which by definition means beginning. The time is perfect to consider what "will be." God sent Jesus into the world to provide a new beginning. We stand under the star of Bethlehem in wonder and gratitude.

The beginning actually starts before the beginning. In recent weeks we have all been asked to commit of our time and resources to St. Philip's. In order to plan for a new year, there must be a sense of what we are willing to commit to make things happen. With the money made available by the mortgage being paid off and increased financial commitment, tremendous things are possible here at St. Philip's. How will we continue to serve? How can we find new ways to teach and to learn? How can we design our worship to be more meaningful? How can we improve our facility?

As Christmas rushes toward us, let us take time to reflect on the marvels of the past year. The new year, like the infant Jesus will grow and bring us great joy. And as with any infant, we will do our part to help it grow and flourish.

---

## Mortgage Update

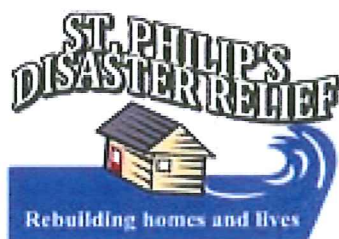
The mortgage elimination effort received a very generous response. Between gifts already received and gifts promised throughout the year, St. Philip's will be debt free before the end of 2016. A monthly snapshot of the progress will be printed each month in *The Friend* until it's down to zero! Thanks again to all who responded with such generosity!

Mortgage Balance on January 1, 2016: \$185,840.97

Mortgage Balance on October 31, 2016: \$ 15,889.35

St. Philip's	October 2016	Budget YTD	Actual YTD
	Income	\$658,502	\$641,028
	Expense	(\$685,747)	(\$674,896)
	TOTALS	(\$27,245)	(\$33,868)

## St. Philip's Disaster Relief *Fundraiser Dinner and Auction*



The annual SPDR Fundraiser Dinner and Auction will be held Sunday, February 19, 2017. There will be two seatings - at 4:00 and 6:00 pm. Cost is \$10 for adults and \$5 for children. As in the past, tickets for the dinner must be purchased in advance. Tickets will go on sale in January, 2017.

The auction will be sealed bid and items will be available for bidding after worship on February 18 & 19 and during the dinner. More details will be available in late December. We look forward to sharing a delicious dinner with you all again.



## Life Events

### December Anniversaries:

Donald & Charlotte Fauteck on 12/14/1957 for 59 years  
Burton & Judith Ferrier on 12/30/1961 for 55 years  
Rodney & Sylvia Strand on 12/6/1969 for 47 years  
Charles & Bunny Nara on 12/14/1969 for 47 years  
Steven & Lynn Holter on 12/19/1970 for 46 years  
Lee & Margo Tech on 12/26/1970 for 46 years  
Kenneth & Cynthia Knoepke on 12/22/1973 for 43 years  
Douglas & Miriam Haugland on 12/21/1974 for 42 years  
Thomas & Karla Blomberg on 12/10/1977 for 39 years  
Steven & LaVerne Poniatowski on 12/12/1981 for 35 years  
Scott & Trisha Wehr on 12/28/1998 for 18 years  
Heather & Jeffery Stokes on 12/21/2005 for 11 years



### Sympathy:

To the friends and family  
of Deloris Swee upon her death

*St. Philip's invites you to attend*

~~~

### *The St. Philip's Christmas Concert*

Featuring:

Sanctuary Choir, Worship Band,  
and Bells of Praise

Sunday, December 11 at 4:00 pm

All are welcome!

Reception to follow in the  
Fellowship Hall



## Kinshoppe Supplies Needed

St. Philip's has committed to providing all gift wrapping supplies (tape, wrapping paper, bows, ribbons, etc) for the upcoming "Kinshoppe" – a shopping day held at St. Philip's for disadvantaged children in the Kinship Program. If you have wrapping supplies you no longer need, or if you would like to donate new items please bring them to the church office by Friday, December 9.

## The St. Philip's Endowment Fund

*"Every good gift  
and every perfect gift  
is from above"*  
James 1:17



October gifts were received in  
memory of

*Roger Kaye  
Bernice Grandstrand  
LuJean Juwrud  
Jane Hokenstrom  
Margaret Miland  
and  
Myron Nash's sister*

Thank you to all who support  
The St. Philip's Endowment Fund.

For more information about St. Philip's Endowment Fund, contact a member of the Endowment Fund Committee: Bob Becker, Dana Rebelein, Jennifer Prasek, Dick Lekang, Joan Kruse, Virg Herrick, Jeanine Grandstrand and Ron Ackerman. Or visit the St. Philip's website at [www.splcmn.org](http://www.splcmn.org), select the Ministries tab and click Endowment.

## Property & Grounds Update

The Property & Grounds Committee has established three funds for the purpose of raising money for projects to maintain and enhance our church home. These are:

- **Building for the Future:** This fund is for the restoration of our building and grounds. It has been in place for over two years now, but there is still work to be done, such as stained glass window repair, additional landscaping, updating our heating and air conditioning systems, etc.
- **Storage Facility:** This project will replace the current garage with a structure that is large enough to provide storage space for the equipment used to maintain the church and grounds, as well as for items that are used only during specific times during the church year. It would also be used to house the two St. Philip's Disaster Relief trailers, protecting them from the elements and possible vandalism.
- **Fellowship Hall:** This includes changes that will transform the hall from a gym-like facility to an area that could be effectively used for large gatherings, such as dinners, presentations, worship services, etc. High on the priority list is improving the acoustics in the room and installing a permanent sound system.

Please consider contributing to one or more of these appeals if you are contemplating a gift to the church.

If you have any questions concerning any of these projects,  
please contact Dick Kruse [dick.kruse@gmail.com] or any other member of the  
Property & Grounds Committee. Thank you!



## Columbarium Notices

Peace of mind can be found in many ways. Begin your gift of "Peace of Mind" for your loved ones by purchasing your final resting place and planning your funeral. St. Philip's Columbarium Niches may be reserved in the office. Niches hold two urns and are available in two sizes with prices ranging from \$2,500 to \$3,000. For more information contact Neal Anderson [763-862-8092]. Information packets are available in the church office.

*Peace  
of  
Mind*

The Columbarium Committee is searching for a new member to join the committee beginning in January 2017. The term is a four year commitment. There shouldn't be a need for more than a few meetings a year and assistance with Committal Services as you are able. Please contact Joan Kruse [612-251-3908] or Ed Hamernik [763-571-6091] for more information or to notify the committee of your interest.

## Nigeria Mission Travel



There is an opportunity for 1 or 2 people from St. Philip's Church to travel to Nigeria sometime in November or December 2017. The purpose of this trip is to enhance the companion relationship with Bille Lutheran Church that was formed in 2006. This trip is being led by Kris Perry who organized the 2006 and 2008 trips to Bille. The travel itinerary would include visiting such places as LCCN Bille congregation, Mashiah Foundation, Bronnum Lutheran Seminary, Demsa Hospital, and Bezer Home. Interested? Contact Phyllis Ehlers (member of Global Mission Team) [lpehlers@gmail.com or 763-571-5192].







# St. Philip's

LUTHERAN CHURCH

## December 2016

| SUNDAY                                                                                                                                                                                                       | MONDAY                                                                                                                                                                                                                         | TUESDAY                                                                                                                                                                                                                                                            | WEDNESDAY                                                                                                                                                                                                                                    | THURSDAY                                                                                                                                               | FRIDAY                                                    | SATURDAY                                                                                                                                             |
|--------------------------------------------------------------------------------------------------------------------------------------------------------------------------------------------------------------|--------------------------------------------------------------------------------------------------------------------------------------------------------------------------------------------------------------------------------|--------------------------------------------------------------------------------------------------------------------------------------------------------------------------------------------------------------------------------------------------------------------|----------------------------------------------------------------------------------------------------------------------------------------------------------------------------------------------------------------------------------------------|--------------------------------------------------------------------------------------------------------------------------------------------------------|-----------------------------------------------------------|------------------------------------------------------------------------------------------------------------------------------------------------------|
|                                                                                                                              |                                                                                                                                                                                                                                |                                                                                                                                                                                                                                                                    |                                                                                                                                                                                                                                              | <b>1</b><br>7:00 am<br>Men's Book Discussion<br>7:00 pm<br>Recovery International<br>7:30 pm<br>AA<br>Alanon                                           | <b>2</b><br>1:00 pm<br>EA Group<br>6:00 pm<br>Women's GA  | <b>3</b><br>5:00 pm<br>Saturday<br>Evening Worship                                                                                                   |
| <b>4</b><br>8:30 am<br>Worship<br>9:35 am<br>Sunday Morning<br>Wonder<br>Sunday School<br>10:30 am<br>Worship                                                                                                | <b>5</b><br>1:00 pm<br>Joy Circle<br>4:30<br>Chair Yoga<br>6:00 pm<br>Mat Yoga<br>6:30 pm<br>Cub Scouts Mtg<br>7:00 pm<br>GA; Gamanon                                                                                          | <b>6</b><br>10:00 am<br>Staff Mtg<br>1:00 pm<br>Tuesdays Together<br>5:00 pm<br>Solid Ground AA<br>6:00 pm<br>Worship Band Practice<br>6:30 pm<br>Cub Scouts Mtg                                                                                                   | <b>7</b><br>8:30 am<br>WOW & Men's Work Crew<br>9:00 am<br>Quilters<br>10:00 am<br>EA Group<br>5:45 pm<br>Advent Wednesdays<br>6:00 pm<br>Bells of Praise<br>Middle & High School<br>Ministry<br>7:00 pm<br>AA<br>Sanctuary Choir            | <b>8</b><br>11:00 am<br>55+ Event<br>7:00 pm<br>Recovery International<br>7:30 pm<br>AA<br>Alanon                                                      | <b>9</b><br>1:00 pm<br>EA Group<br>6:00 pm<br>Women's GA  | <b>10</b><br>8:00 am<br>Choir Rehearsal<br>10:00 am<br>Christmas Kinshope<br>5:00 pm<br>Saturday<br>Evening Worship<br>6:00 pm<br>Saturday<br>Supper |
| <b>11</b><br>8:30 am<br>Worship<br>9:35 am<br>Youth Bake Sale<br>Sunday Morning<br>Wonder<br>Sunday School<br>10:30 am<br>Worship<br>11:30 am<br>Youth Bake Sale<br>4:00 pm<br>Christmas Concert & Reception | <b>12</b><br>9:00 am<br>Glory Circle<br>1:00 pm<br>Global Health Ministries<br>2:00 pm<br>Lynwood Bingo<br>4:30<br>Chair Yoga<br>6:00 pm<br>Mat Yoga<br>6:30 pm<br>Benevolence Mtg<br>Cub Scouts Mtg<br>7:00 pm<br>Gamanon; GA | <b>13</b><br>10:00 am<br>Staff Mtg<br>1:00 pm<br>Tuesdays Together<br>2:30 pm<br>Heritage Mtg<br>3:00 pm<br>Endowment Mtg<br>5:00 pm<br>Solid Ground AA<br>6:00 pm<br>Worship Band<br>6:30 pm<br>Property & Grounds Mtg<br>Parish Fellowship Mtg<br>Cub Scouts Mtg | <b>14</b><br>8:30 am<br>WOW & Men's Work Crew<br>10:00 am<br>EA Group<br>Women's Book Club<br>5:45 pm<br>Advent Wednesdays<br>6:00 pm<br>Bells of Praise<br>Middle & High School<br>Ministry<br>7:00 pm<br>AA<br>Sanctuary Choir             | <b>15</b><br>7:00 am<br>Men's Book Discussion<br>7:00 pm<br>Recovery International<br>7:30 pm<br>AA<br>Alanon                                          | <b>16</b><br>1:00 pm<br>EA Group<br>6:00 pm<br>Women's GA | <b>17</b><br>9:00 am<br>Comfort & Joy of<br>Quilting<br>5:00 pm<br>Saturday<br>Evening Worship                                                       |
| <b>18</b><br>8:30 am<br>Worship<br>9:35 am<br>Sunday Morning<br>Wonder<br>Sunday School<br>Equal Exc. Coffee Sale<br>10:30 am<br>Worship & Christmas<br>Pageant<br>11:30 am<br>Reception                     | <b>19</b><br>4:30<br>Chair Yoga<br>6:00 pm<br>Mat Yoga<br>6:30 pm<br>Cub Scouts Mtg<br>7:00 pm<br>Gamanon; GA                                                                                                                  | <b>20</b><br>8:30 am<br>Assemble <i>The FRIEND</i><br>9:00 am<br>Library Mtg<br>10:00 am<br>Staff Mtg<br>1:00 pm<br>Tuesdays Together<br>5:00 pm<br>Solid Ground AA<br>6:00 pm<br>Worship Band<br>6:30 pm<br>Cub Scouts Mtg                                        | <b>21</b><br>8:30 am<br>WOW & Men's Work Crew<br>9:00 am<br>Quilters<br>10:00 am<br>EA Group<br>2:00 pm<br>Global Missions<br>Team Mtg<br>6:00 pm<br>Bells of Praise<br>Middle & High School<br>Ministry<br>7:00 pm<br>AA<br>Sanctuary Choir | <b>22</b><br>7:00 pm<br>Recovery International<br>7:30 pm<br>AA<br>Alanon                                                                              | <b>23</b><br>1:00 pm<br>EA Group<br>6:00 pm<br>Women's GA | <b>24</b><br>~Christmas Eve~<br>2:00 pm<br>Worship<br>4:00 pm<br>Worship<br>10:00 pm<br>Candlelight Worship                                          |
| <b>25</b><br>~Christmas Day~<br>10:00 am<br>Worship<br>                                                                    | <b>26 ~ OFFICE CLOSED ~</b><br>1:30 pm<br>Knitters & Crocheters<br>6:30 pm<br>Cub Scouts Mtg<br>7:00 pm<br>Gamanon; GA                                                                                                         | <b>27 ~ OFFICE CLOSED ~</b><br>5:00 pm<br>Solid Ground AA<br>6:00 pm<br>Worship Band<br>Global Health Ministries<br>6:30 pm<br>Cub Scouts Mtg<br>6:45 pm<br>Board of Administration<br>Mtg                                                                         | <b>28</b><br>8:30 am<br>WOW & Men's Work Crew<br>10:00 am<br>EA Group<br>6:00 pm<br>Bells of Praise<br>7:00 pm<br>AA<br>Sanctuary Choir                                                                                                      | <b>29</b><br>Articles due for<br><i>The Friend</i><br>7:00 am<br>Men's Book Discussion<br>7:00 pm<br>Recovery International<br>7:30 pm<br>AA<br>Alanon | <b>30</b><br>1:00 pm<br>EA Group<br>6:00 pm<br>Women's GA | <b>31</b><br>~New Year's Eve~<br>5:00 pm<br>Saturday Evening<br>Worship Cancelled                                                                    |



6180 Highway 65 NE  
Fridley, MN 55432-5158

ADDRESS SERVICE REQUESTED

NON-PROFIT ORG.  
U.S. Postage PAID  
TWIN CITIES, MN  
PERMIT # 2705

place label here

## St. Philip's Lutheran Church

*A member of the ELCA*

[www.splcmn.org](http://www.splcmn.org) • [info@splcmn.org](mailto:info@splcmn.org)

Phone: 763-571-1500 • Fax: 763-572-2292

### Church Staff

**Joel Wight Hoogheem**, Senior Pastor  
[JoelWH@splcmn.org](mailto:JoelWH@splcmn.org), ext. 112

**Mollie Dvorak**, Associate Pastor  
[MollieD@splcmn.org](mailto:MollieD@splcmn.org), ext. 110

**Jeannine Arcand**, Office Manager  
[JeannineA@splcmn.org](mailto:JeannineA@splcmn.org), ext. 104

**Amada Márquez**, Publications and Membership Coordinator  
[AmadaM@splcmn.org](mailto:AmadaM@splcmn.org), ext. 101

**Sara Quarberg**, Director of Youth & Young Adult Ministries  
[SaraQ@splcmn.org](mailto:SaraQ@splcmn.org), ext. 108

**Connie Yerigan**, Director of Children & Family Ministries  
[ConnieY@splcmn.org](mailto:ConnieY@splcmn.org), ext. 107

**Eva Jensen**, Visitation Ministry Leader  
[EvaJ@splcmn.org](mailto:EvaJ@splcmn.org)

**Jennifer Thurman**, Worship Band Director  
[JenniferT@splcmn.org](mailto:JenniferT@splcmn.org), ext. 106

**Stephanie Phelps Johnson**, Sanctuary Choir Director  
[StephanieP@splcmn.org](mailto:StephanieP@splcmn.org), ext. 106

**David Geslin**, Organist  
[DavidG@splcmn.org](mailto:DavidG@splcmn.org)

**Jerry Salitros**, Bookkeeper  
[JerryS@splcmn.org](mailto:JerryS@splcmn.org), ext. 103

**Katie Swenstad**, Full-Time Custodian  
[KatieS@splcmn.org](mailto:KatieS@splcmn.org), ext. 109

**Michelle Hill**, Part-Time Custodian

### Board of Administration

[BOA@splcmn.org](mailto:BOA@splcmn.org)

**Mike Youngberg**, President  
[zubazwizard@gmail.com](mailto:zubazwizard@gmail.com)

**Val Sperry**, Vice-President  
[sperryvs@aol.com](mailto:sperryvs@aol.com)

**Howard Thompson**, Treasurer  
[howard\\_thompson@comcast.net](mailto:howard_thompson@comcast.net)

**Angela Anderson**, Secretary  
[bargela@msn.com](mailto:bargela@msn.com)

**Nina Ball**  
[ninaball7117@gmail.com](mailto:ninaball7117@gmail.com)

**Dawn Hansen**  
[dawng48@hotmail.com](mailto:dawng48@hotmail.com)

**Brad Heitland**  
[heitland@gmail.com](mailto:heitland@gmail.com)

**Bryant Holmstrom**  
[bryantholmstrom@gmail.com](mailto:bryantholmstrom@gmail.com)

**Kathy Pullen**  
[kathyfpullen@gmail.com](mailto:kathyfpullen@gmail.com)

**Betty Schweppe**  
[bschweppe@hotmail.com](mailto:bschweppe@hotmail.com)

**Missionaries: Jim & Carol Sack**

**Companion Congregation: Bille Lutheran in Nigeria**

**Ministers: All members of the Parish**

**The Friend deadline:**

December 30 for the February issue

E-mail typed copy (250 word max) to: [AmadaM@splcmn.org](mailto:AmadaM@splcmn.org)