

The Friend

January 2017

Come as you are to Worship, Wonder, and Work in Jesus' name!

Looking Ahead *by Pastor Joel Wight Hoogheem*

When I was called to St. Philip's, it was clearly communicated to me that this was a congregation that wanted to follow the leading of the Holy Spirit to change and adapt its ministries to best serve the surrounding community and world. I think this is still true of St. Philip's as I depart.

In these days, as I prepare to say goodbye to this community and begin my new call, I find myself looking back over the past five-plus years. I appreciate so many of the relationships that I've made and so many of the opportunities to do God's work in the world that we've shared. I'm heartened by the good times, disappointed by my shortcomings, and pleased with the ministry that has taken place.



Yet when I catch myself reminiscing too much, the Holy Spirit has a way of drawing my attention forward instead of backward. This happened very clearly as I read these words from Peter Enns: "The past informs the present, but it also serves the present. When the present serves the past, we are stuck in nostalgia, longing for the good old days - a sure recipe for emotional and spiritual dysfunction." While Enns was writing about how we read the Bible, his words struck a chord in me about our common human tendency to get stuck in that sense of nostalgia instead of letting the past serve the present - and, I would argue - letting the past serve the future.

While I believe that I've done good, faithful work in my call at St. Philip's and I certainly hope to be remembered fondly, I know that this community will be working in the present and discerning what sort of future into which God is leading it. So, yes, for instance, the fact that the mortgage has been paid off can be celebrated. But that celebration can look ahead to the opportunities God is giving as a result of being free from debt. How much more generous can St. Philip's be? What new ways can the congregation reach out into the surrounding neighborhood and community? How is God equipping St. Philip's to be engaged with the changing technological realities of the world?

~Con't on page 2

In this issue

Pastor Joel	1
Youth Ministries	2
Children Ministries	3
Library News & Thank You	3
Global Mission Festival	4 - 5
Letter from Nigeria	5
President's Column	6
November Budget	6
SPDR Lasagna Dinner	6
Life Events	7
Endowment Fund	7
Mortgage Update	7
Pastor Joel Reception	8
Lunch Bunch	8
55+ February Event	8
<55 January Event	8
January Calendar	9
<i>The Friend</i> Deadline	10
Contact Information	10



~Con't from page 1

Please know that I am incredibly thankful for the years I have served as the Senior Pastor of St. Philip's. Even more than that, however, I am excited for what's ahead for this faith community. I pray that St. Philip's will be a healthy and vital congregation, sharing God's good news and shining the light of Christ out into the world.

Pastor Joel



Happy New Year!

Sara Quarberg,

Director of Youth & Young Adult Ministries

Happy New Year! As I reflect on all that God has done in the lives of our young people and this entire congregation this past year, I cannot help but be filled with awe, joy, and gratefulness for the ways in which we've all engaged in ministry together. Many of these experiences have included service, fellowship, learning, and worship. One of my favorite service events of the year happens to be constructing our Bags of Hope and experiencing all of the energy surrounding the donation of the items, the filling of the bags, the distribution to the congregation, and the stories of encountering those in need with some hope. It's beautiful to witness the call and excitement from both the youth who prepare these bags and the various congregation members who hand them out. Thank you for being a part of God's ministry and mission in God's world in this way!

We could never possibly make enough bags, so we'd like to invite you to make your own and hand them out throughout the year. Here are some ideas of what we include in our bags and what you could include in yours:

- Non-perishable snack food items
- Bottles of water
- Toothbrushes/Paste
- Deodorant
- Shampoo
- Hand sanitizer
- Lotions
- Body wash
- Socks
- Mittens/Gloves
- Hand/Foot Warmers
- Gift cards for local restaurants
- A note of hope and love!

If you have a story to share with the youth about your experience handing out your bag, we'd love to hear it! Please email me at saraq@splcmn.org and we will be sure to share your story. Thank you for loving your neighbor as Christ has called us to do and for being a vital part of God's ministry here and in our community.

With so much hope,
Sara

New Year, New Possibilities

Connie Yerigan, Director of Children & Family

Happy New Year to you and your family! My wish for you, in this New Year, is peace, happiness, joy, good health and love.

As we start a new year, I believe it's important to look back on the past year and cherish the memories that were made. We ended the year with amazing enthusiasm and success. Our Advent Wednesdays were amazing! My heart was so full of joy after each week. Seeing everyone come together as we shared meals, created Advent jars, helped prepare for our youth's bake sale, practiced for the pageant, and sang hymns together. It was fantastic! I cannot wait to keep that ball rolling into the new year as I plan new activities for the families here at St. Philip's.

This year you can look forward to more family meals shared together, creating a bond between other families and your own as you grow in your faith here at St. Philip's. Participating in service projects that will allow us to use our gifts and talents that God has given to us to help others in our community and around the world.

These are just a few things. This is sure to be an amazing year here at St. Philip's. I am truly honored to be a part of such an amazing family that I have in all of you.

Blessings,
Connie

Book Fair Thank You

Thank you to everyone who supported the St. Philip's Library at the recent Holiday Book Fair. The Library group appreciates your loyalty. We trust your book purchases will help to make your holidays cheery and bright.

Library Update

Many new books have recently been added to the church library. Stop in and take a look. Here are some of the new titles.

"Fly a Little Higher" by Laura Sobiech. This book recounts the life of Zach Sobiech, Minnesota teen musician, who wrote the hit song, "Clouds" after he was told he had one year to live.

"Counting the Days While My Mind Slips Away" by Ben Utecht. After five concussions NFL tight end Ben Utecht is losing his memories. In an effort to have his wife and family understand how much he loves them, he recorded his remaining memories.

"Small Things with Great Love" by Margot Starbuck. The author explores Jesus' command to love your neighbor by seeing the people around you and exploring the huge impact you can have on them through small acts of love.

"North Woods Girl" by Aimee Bissonette. An admiring granddaughter takes in all seasons with her grandma, the original north woods girl. Together they see squirrels gathering nuts, hear wood frogs peep, inhale piney scents, and choose the finest skipping stone.

"The Sign of the Cat" by Lynne Jonell, Duncan, 11, is very smart with the ability to speak cat. His mother has always insisted he appear average. When a perfect test score draws attention to him, Duncan finds himself on a quest for his true identity.

Global Mission Festival *Saved by Grace*

"...for all of you share in God's grace..." Philippians 1:7



Global Mission Festival

St. Philip's Global Mission Festival on January 14 and 15 will focus on the congregation's Companion Congregation in the Lutheran Church of Christ in Nigeria - LCCN Bille.

Nigerian Supper

You are invited to participate in a Nigerian meal on Saturday, January 14 as part of the Mission Festival. The monthly Saturday Supper this month will feature ethnic foods. The meal will be served at 5:45 PM. Everyone is welcome and cash donations are accepted. Sign-up on the board located at Door #2 during the week and Door #1 on weekends, or contact Angela [bargela@msn.com].

Mission Offering

A special Global Mission Offering on January 14 and 15 will be designated for the projects mutually supported by St. Philip's and LCCN Bille. The goal of \$3,900 will enable us to continue supporting these ministries for one year: 1) Salary for evangelist Pius Kasuwa, 2) Salaries for teachers' aids at Nazareth Schools, 3) Scholarships for primary students.

Travel to Nigeria

In 2006 and again in 2008 members of St. Philip's had the privilege of a personal visit with the Bille congregation, experiencing a warm reception. Because of violence in that country in recent years, travel by groups to Nigeria has been discouraged. However, this year we again have an opportunity to join in a trip to Nigeria including a visit with LCCN Bille. The 10-day trip is being planned for November or December, 2017 by St. Stephen Lutheran Church of Bloomington with Kris Perry as coordinator. They welcome one or two members of St. Philip's to join in the trip. Will you consider having this meaningful experience? Anyone interested in this great opportunity to promote the relationship between St. Philip's and LCCN Bille, experience the inspiring worship services, and to get acquainted with Nigeria should apply by January 15, 2017. In addition to visiting our Companion Congregation, the itinerary will include such places as Bronnum Lutheran Seminary, Mashiah Foundation, Bezer Home and Demsa Hospital. To apply or for more information email Jim Hougen [mjhougen@usfamily.net].

Travel Scholarships

Funds have been donated for the specific purpose of assisting in travel. If you would like to participate in the trip to Nigeria and need assistance, contact the Global Mission Team, which manages the scholarship fund. Members of the team who have previously traveled to Nigeria are willing to share more information: Phyllis Ehlers [pehlers@gmail.com], Dana Rebelein [danarebelein@gmail.com], and Jim Hougen [mjhougen@usfamily.net].

LCCN Bille - Companion Congregation

The relationship between St. Philip's and LCCN Bille began ten years ago. In 2006 Pastor Jan Hartsook and Paul and Dana Rebelein traveled to Nigeria and made initial contact with the Lutheran congregation in the small village of Bille. At that time it was agreed that the two congregations would share information with each other and mutually support several ministries. Since then St. Philip's has provided funding for the salary of evangelist Pius Kasuwa as he does outreach ministry among Muslims in outlying areas. We continue to give scholarships for students and pay salaries for teachers' aids in Nazareth Nursery and Primary School, operated by the local congregation.

LCCN Archbishop Elected

The Lutheran Church of Christ in Nigeria elected Dr. Musa Panti Filibus to the position of Archbishop at their churchwide convention on November 24, 2016. He is currently bishop of the Mayo Belwa Diocese and previously served the Lutheran World Federation, first as Secretary for Africa, then as director of the Department for Mission and Development. Some members of St. Philip's remember that years ago Dr. Filibus and family often worshipped at St. Philip's while he was studying at Luther Seminary. He replaces Pastor Nemuel Babba, who has been archbishop of LCCN for a number of years. Babba visited the Minneapolis Area Synod, including St. Philip's congregation, in 2008.

LCCN and ELCA

The Lutheran Church of Christ in Nigeria, with a membership of 3 million members, was founded in 1913. Missionary work was begun by the Danish Pastor, Dr. Niels Bronnum. From the beginning, American Lutherans were involved in this mission. A Danish-American Lutheran congregation in North Dakota helped finance Dr. Bronnum's travel to Nigeria and his beginning mission activity. A number of Americans have served as missionaries in Nigeria since that time. Currently the ELCA has two missionaries in Nigeria. Mary Beth Oyeade, together with her husband founded and operate the Mashiah Foundation, a ministry to victims of HIV-AIDS. Dorthea Hustoff-Hamman is involved in education; her husband is a Lutheran pastor.

We pray

Thankful for our relationship with our companion congregation, we support our brothers and sisters in the faith as we pray for LCCN Bille, for Archbishop Filibus as he begins his new position, and for peace in a country that has suffered violence.

-Jim Hougen, Global Mission Team Member

Post-election Words of Comfort, Encouragement, and Wisdom

Reverend Briska: Billie, Nigeria

I send you greetings from BLS [Bronnum Lutheran Seminary Mbamba, Yola, Nigeria]. I hope that you are all doing fine. I pray that God will continue to bless you with good health, peace and love.

I am very glad to watch and follow up your successful conclusion of election, even though there are mixed feelings, emotions and frustration. I think that this is what politics stands for, people coming from their various angles, ideologies or areas of interests. But after it all, there is a need to come together to think and work together, knowing that fully no one lives in isolation today. Globally, every community needs the other. What we need to be doing as Christians is to pray for our leaders, support them and give them good counsel, trusting that they will have listening ears and will to work for human common interest.

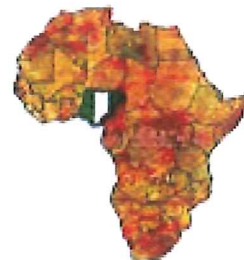
This is year of election in LCCN from local congregation to national. We request for your prayers. We always remember you and all your support.

I am doing my best to conclude my tenure in academic office, it is challenging, but I enjoy contributing my part. At least we have moved and still moving to a certain level regarding our affiliation demand process and academic standard.

I am wishing you the best.

Thank you,

Rev. Sekenwwa Moses Briska Ph.D.



President's Column *Mike Youngberg*

Change can be good and change can be bad. Exciting or frightening. Sometimes change comes easy. Sometimes it comes hard. By now, word is out, and many of you are aware that the Board of Administration voted in October to discontinue the Saturday night service. At the time I am writing this, an exact timeline has not been set. It was the Board's hope that that would have been accomplished in November, but it was delayed. By the time you read this, a timeline will have been announced, and you will, hopefully, have heard the official rationale for making the decision. There is not room for me to lay it out here.

This change is not easy partly because the service has been a part of the congregation for over twenty years. It was not made in haste nor without considering the many possible repercussions. The Board knows that some members will be angry, some will be hurt, some sad, and some confused. For the members of the Board, this is made worse by the fact that those who will be affected are often friends.

It is important for the congregation to know that this decision was made in the best interests of the entire St. Philip's congregation. The Board is tasked with moving the mis-

sion of the church forward and providing for the long term well-being of the congregation. The members of the Board had nothing personal to gain. To be honest, knowing that there was likely to be some adverse reaction, would have made it easy to sit back and do nothing.

The recent election, which often pitted friend against friend and family member against family member, has shown us clearly that we cannot forget that those with whom we disagree are still human beings and to be treated as such. Most often the "others" are not acting with malice. Nor are they stupid or ignorant. Because of our differing perspectives, we see our own interests and those of others differently.

As we move forward, we must all allow Jesus to rule in our hearts and guide us as we navigate the sometimes turbulent waters of the future. Pray often and for everyone. Not just those with whom you agree, but those who oppose you as well. Pray for a spirit of understanding and wisdom. Pray for peace - that when all is finished, we continue to love and care for one another. In the end, all that we do, we do in Jesus' name.

St. Philip's	November 2016	Budget YTD	Actual YTD
	Income	\$725,314	\$694,872
	Expense	(\$749,937)	(\$738,344)
	TOTALS	(\$24,623)	(\$43,472)

St. Philip's Disaster Relief Dinner & Auction

Check your calendars – the annual SPDR fundraiser lasagna dinner and sealed bid auction will be held on Sunday, February 19.

Tickets for the dinner will be available for purchase after worship services on January 15, 21, 22, 29 and February 5. Tickets are \$10 for adults and \$5 for children 5 to 12 years old (under 5 are free.) There will be two seatings for the dinner – 4:00 and 6:00 p.m. The dinner menu includes lasagna, salad, breadsticks, dessert, and beverages. All tickets must be purchased in advance. The dinner sold out last year, so be sure to purchase your tickets early.



Auction items will be available for bidding after worship on February 18 and 19 and at the dinner. A portion of the auction proceeds (up to \$2,500) will be earmarked to help fund the storage facility that is under consideration and, once built, will house the Disaster Relief trailers.

The dinner and auction proceeds provide most of the funding for St. Philip's Disaster Relief and ensures that the journey continues.

Life Events

January Anniversaries

Kermit & Frances Hollen on 1/30/1960 for 57 years

John & Josephine Riley on 1/5/1961 for 56 years

Ronald & Marlene Hirth on 1/28/1961 for 56 years

Richard & Laurel Harris on 1/27/1962 for 55 years

Roger & Sandra Goman on 1/26/1963 for 54 years

Steve & Lynn Britven on 1/11/1986 for 31 years

Steven & Gail Olson on 1/16/1991 for 26 years

Victoria & Kitah Emmanuel on 1/1/1993 for 24 years

Dennis & DeeAnn Gritti on 1/15/2000 for 17 years

Dane & Dena Froiland on 1/10/2004 for 13 years

David & Mollie Dvorak on 1/30/2010 for 7 years



Sympathy

To the friends and family

of David Kramber upon his death



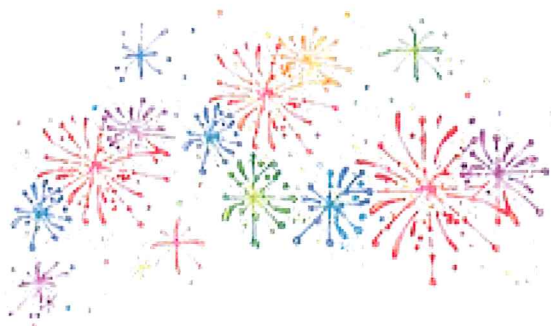
Mortgage Update

We want to thank everyone who contributed to the "Mortgage Elimination Fund". With the tremendous response in 2016, we can look forward to using our financial resources to further the mission of St. Philip's without the monthly obligation of a mortgage payment.

Mortgage Balance on January 1, 2016: \$185,840.97

Mortgage Balance on November 30, 2016: \$ 0.00

Thanks be to God!



The St. Philip's Endowment Fund

***"what shall I render unto
the Lord [for] all his benefits
toward me?"***

Psalm 116:12

November gifts were received in
memory of

Maren Zabel
&
Kenneth Mueller

And to celebrate the baptism of
Hannah Brandt

For more information about
St. Philip's Endowment Fund,
contact a member of the
Endowment Fund Committee:
Bob Becker, Dana Rebelein,
Jennifer Prasek, Dick Lekang,
Joan Kruse, Virg Herrick,
Jeanine Grandstrand, and Ron
Ackerman. Or visit the St. Philip's
website at [splcmn.org] select
the Ministries tab and click
"Endowment."

***Thank you to all who
support the
St. Philip's Endowment***

Pastor Joel Reception

Grateful, Faithful, and Hopeful

Grateful:

We are so thankful that the Holy Spirit led Pastor Joel to St. Philip's over 5 years ago. Please join us on Sunday, January 8 at 11:30 am in the Fellowship Hall for a reception to say goodbye and thank you to Pastor Joel for his leadership and faithful service to the people and ministries here.

Faithful:

We trust in the Holy Spirit's leading that has called Pastor Joel to a new position at Lord of Life Lutheran Church in Maple Grove.

Hopeful:

We rely on God's guidance as we continue God's work through the members and staff at St. Philip's.

Lunch Bunch

Lunch Bunch will meet Thursday, January 5 from 11:30 am – 1:30 pm. We will once again meet at Teppanyaki Grill in Fridley. We are able to use the back room and they have offered to take one lump payment for the group. If you would like to be a part of this please bring \$12 cash for the meal including beverage (\$10 without beverage) or a check to Mike Youngberg. If you choose to pay with a credit card a waitress can assist you. Any questions please call Renee Youngberg [763-780-6390]. Hope to see everyone there!

55+ Retirees: February Event

"The Dining Room" a comedy - Fridley Community Theater

Come out on Sunday, February 12 at 3:00 pm for an entertaining afternoon at the Fridley Community Theater 6085 7th St NE, Fridley, MN 55432. The comedy play "The Dining Room" was scripted as a series of overlapping vignettes, which feature a host of characters as they go about their daily business. Each of the eighteen scenes, which range from the comic to the serious, explores the dynamic relationships of family life. Tickets are available at the door for \$15 per person. We hope to see you there!

<55 January Event: Chili Cook-Off (*Less Than 55 Years Old*)



Please join the <55 Group (Less than 55 years old) for a chili cook-off in the Lounge on Friday, January 20 at 6:00 pm. Now that the weather is definitely cold; start finessing those recipes! Categories for the chili cook-off are vegetarian, spicy, classic, and unique! Fun Prizes for those who win.

For more information and to register send an email with your name, chili category, and any questions to Amada Márquez [AmadaM@splcmn.org] by January 13. As Glenn Fry says "The Heat Is On"!



St. Philip's

LUTHERAN CHURCH

January 2017

SUNDAY	MONDAY	TUESDAY	WEDNESDAY	THURSDAY	FRIDAY	SATURDAY
1 <i>New Year's Day</i> 10:00 am Worship	2 <i>Office Closed</i>	3 10:00 am Staff Mtg 1:00 pm Tuesdays Together 5:00 pm Solid Ground AA 6:00 pm Worship Band Practice 6:30 pm Cub Scouts Mtg	4 8:30 am WOW & Men's Work Crew 9:00 am Quilters 10:00 am EA Group 6:00 pm Middle & High School Ministry 7:00 pm AA Sanctuary Choir	5 11:30 am Lunch Bunch 7:00 pm Recovery International 7:30 pm AA Alanon	6 1:00 pm EA Group 6:00 pm Women's GA	7 5:00 pm Saturday Evening Worship
8 8:30 am Worship 9:35 am Sunday School Buy a Mile - HS Fundraiser Middle & High School Ministry Adult Forum 10:30 am Worship 11:30 am Reception for Pastor Joel	9 9:00 am Glory Circle 9:30 am LEAFs Meeting 10:00 am Columbarium Mtg 1:00 pm Global Health Ministries 2:00 pm Lynwood Bingo 6:00 pm LifeGroups 6:30 pm Benevolence Mtg Cub Scouts 7:00 pm All Committee Mtg GA; Gamanon	10 10:00 am Staff Mtg 1:00 pm Tuesdays Together 2:30 pm Heritage Mtg 5:00 pm Solid Ground AA 6:00 pm Worship Band Practice 6:30 pm Cub Scouts Mtg	11 8:30 am WOW & Men's Work Crew 10:00 am EA Group Woman's Book Club 6:00 pm LifeGroups Middle & High School Ministry 7:00 pm AA Sanctuary Choir	12 7:00 am Men's Book Discussion 1:00 pm 55+ Group 6:30 pm LifeGroups 7:00 pm Recovery International 7:30 pm AA Alanon	13 1:00 pm EA Group 6:00 pm Women's GA	14 5:00 pm Global Missions Festival Saturday Evening Worship 6:00 pm Saturday Supper
15 8:30 am Worship 9:30 am Sunday School Middle & High School Ministry Adult Forum Equal Exc. Coffee Sale Global Missions Festival 10:30 am Worship	16 <i>Martin Luther King Day ~ Office Closed ~</i> 6:00 pm LifeGroups 6:30 pm Cub Scout Mtg 7:00 pm GA Gamanon	17 9:00 am Library Mtg 10:00 am Staff Mtg 1:00 pm Tuesdays Together 5:00 pm Solid Ground AA 6:00 pm Worship Band Practice 6:30 pm Cub Scouts Mtg 6:45 pm Board of Administration Mtg	18 8:30 am WOW & Men's Work Crew 9:00 am Quilters 10:00 am EA Group 6:00 pm LifeGroups Middle & High School Ministry 7:00 pm AA Sanctuary Choir	19 6:30 pm LifeGroups 7:00 pm Recovery International 7:30 pm AA Alanon	20 1:00 pm EA Group 6:00 pm Women's GA <55 Chili Cook-Off	21 10:00 am Comfort & Joy of Quilting 5:00 pm Saturday Evening Worship
22 8:30 am Worship 9:35 am Sunday School Buy a Mile - HS Fundraiser Middle & High School Ministry Adult Forum 10:30 am Worship	23 1:30 pm Knitters & Crocheters 6:00 pm LifeGroups 6:30 pm Cub Scout Mtg 7:00 pm GA Gamanon	24 9:00 am Assemble <i>The Friend</i> 10:00 am Staff Mtg 1:00 pm Tuesdays Together 5:00 pm Solid Ground AA 6:00 pm Worship Band Practice 6:30 pm Global Health Ministries Cub Scouts Mtg	25 8:30 am WOW & Men's Work Crew 10:00 am EA Group 6:00 pm LifeGroups Middle & High School Ministry 7:00 pm AA Sanctuary Choir	26 7:00 am Men's Book Discussion 7:00 pm Recovery International 7:30 pm AA Alanon	27 <i>Articles due for The Friend</i> 1:00 pm EA Group 6:00 pm Women's GA	28 5:00 pm Saturday Evening Worship
29 8:30 am Worship 9:35 am Sunday School Middle & High School Ministry Budget Forum 10:30 am Worship	30 6:00 pm LifeGroups 6:30 pm Cub Scout Mtg 7:00 pm GA Gamanon	31 10:00 am Staff Mtg 1:00 pm Tuesdays Together 5:00 pm Solid Ground AA 6:00 pm Worship Band Practice 6:30 pm Cub Scouts Mtg				



6180 Highway 65 NE
Fridley, MN 55432-5158

ADDRESS SERVICE REQUESTED

NON-PROFIT ORG.
U.S. Postage PAID
TWIN CITIES, MN
PERMIT # 2705

place label here

St. Philip's Lutheran Church

A member of the ELCA

www.splcmn.org • info@splcmn.org

Phone: 763-571-1500 • Fax: 763-572-2292

Church Staff

Joel Wight Hoogheem, Senior Pastor

JoelWH@splcmn.org, ext. 112

Mollie Dvorak, Associate Pastor

MollieD@splcmn.org, ext. 110

Jeannine Arcand, Office Manager

JeannineA@splcmn.org, ext. 104

Amada Simula, Publications and Membership Coordinator

AmadaM@splcmn.org, ext. 101

Sara Quarberg, Director of Youth & Young Adult Ministries

SaraQ@splcmn.org, ext. 108

Connie Yerigan, Director of Children & Family Ministries

ConnieY@splcmn.org, ext. 107

Eva Jensen, Visitation Ministry Leader

EvaJ@splcmn.org

Jennifer Thurman, Worship Band Director

JenniferT@splcmn.org, ext. 106

Stephanie Phelps Johnson, Sanctuary Choir Director

StephanieP@splcmn.org, ext. 106

David Geslin, Organist

DavidG@splcmn.org

Jerry Salitros, Bookkeeper

JerryS@splcmn.org, ext. 103

Katie Swenstad, Full-Time Custodian

KatieS@splcmn.org, ext. 109

Michelle Hill, Part-Time Custodian

Board of Administration

BOA@splcmn.org

Mike Youngberg, President

zubazwizard@gmail.com

Val Sperry, Vice-President

sperryvs@aol.com

Howard Thompson, Treasurer

howard_thompson@comcast.net

Angela Anderson, Secretary

bargela@msn.com

Nina Ball

ninaball7117@gmail.com

Dawn Hansen

dawng48@hotmail.com

Brad Heitland

heitland@gmail.com

Bryant Holmstrom

bryantholmstrom@gmail.com

Kathy Pullen

kathyfpullen@gmail.com

Betty Schweppe

bschweppe@hotmail.com

Missionaries: Jim & Carol Sack

Companion Congregation: Bille Lutheran in Nigeria

Ministers: All members of the Parish

The Friend deadline:

January 27 for the February issue

E-mail typed copy (250 word max) to: AmadaM@splcmn.org