



# The Friend



**Join Us for Worship!**

**9:00 am - Traditional**

**10:30 am - Contemporary**

## May 2022

### In this issue:

Hello Spring	1
Pastor Matt's Column	2
Pastor Eric's Column	3
Pastor Margie's Column	4
Children, Youth & Family	5
President's Column	6
BOA Highlights	6
Spring Clean-up	6
Heritage Group	7
Garage Sale	7
St. Philip's Disaster Relief	8
Food & Clothing Shelf	8
SPDR - Ready to Roll Books	9
Financials	10
Endowment Grants	10
Life Events	11
Friendly Takeaway	12
Contact Info	12
May Calendar	13
Mission & Vision	14

# PRAYER & SERVE

## Pray & Go

Matt Flom, Pastor

*16 Rejoice always, 17 pray without ceasing, 18 give thanks in all circumstances; for this is the will of God in Christ Jesus for you. 19 Do not quench the Spirit. 1 Thess. 5:16-18*

Dear Sisters and Brothers in Christ,

Grace, love, and peace be to you from God, our Father, and our Lord and Savior Jesus Christ. I must admit that I am a bit anxious for spring. Like most folks, I'm tired of the on and off again winter/spring bit. I want to spend more time outdoors. Paul tells us in his letter to the Philippians, "6 Do not worry about anything, but in everything by prayer and supplication with thanksgiving let your requests be made known to God. 7 And the peace of God, which surpasses all understanding, will guard your hearts and your minds in Christ Jesus." (Phil. 4:6-7) So, I should not be anxious and I should pray and receive God's Peace. I think we all need to pray more and get out. So, let's do just that.

This year we are starting a wonderful way to build up the prayer life of our congregation and at the same time, reach out to the community. It's called Pray & Go. It's quite simple. Small groups of folks will walk through the neighborhoods, stop in front of the house, pray for the people who live there, leave a door hanger telling them we prayed for them, and then move on. Do you like getting out and walking? Do you want to pray more? Do you want our congregation to reach out to the community? Then, Pray & Go is for you.

We will hold some organizing and training sessions this spring. I'm inviting families, groups, and teams in the congregation to consider taking a night/day or two this year for Pray & Go. We will also be organizing separate groups for folks as well. We will be going primarily to neighborhoods in the area around the church, but if you have another neighborhood in mind, let me know. Prayer changes peoples' lives. Here at St. Philip's, we are committed to helping the community to bring about positive change. Let's pray without ceasing and bring that prayer to our community.

# Pray & Go

## Summer at Church

Eric Nelson, Associate Pastor

As I write this article for our May issue of the *Friend*, snow is lightly falling. (Thankfully, not as much as North Dakota just got.) Yet, summer is around the bend! And it brings to mind all sorts of different excitement for the season outdoors.

Folks start planning the get-aways whether it be in or out-of-state, boat and cabins folks get things prepped, state fair folks start preparing projects and/or stomachs, baseball fans apply their sunscreen, and on and on.

There is much movement in summer. What about church? No, I'm not going to tell you to skip out on the cabin or vacation to make sure you don't miss being in church for a Sunday.

What I encourage is considering how we might worship and serve in the summer season. Whether you're here every weekend or out and about often, how will you worship God in this season? With our modern technology, you can still tune-in and worship with us via our website live stream even while on the road or beside the lake. Maybe, like our own family, worship service in the middle of a road trip isn't going to be heard over the child noises in the vehicle. Instead, we will do what my parents did for us growing up when we found ourselves driving rather than being in church. They would open the bible or favorite devotional resource and we'd have a short reading and prayer as we worshiped God on the go. Occasionally we'd even sing a hymn and no other church members were even able to tell if we were off-pitch.

The word worship essentially means a recognition of worth. We are remembering and honoring God in worship. We certainly should gather together at church as we do this, but we can do this many places.

We honor God's worth in our lives as we pray to God, as we serve a neighbor, as we show kindness in a busy stadium, as we have conversations about our faith in the world, as we praise God in God's creation, and so much more.

Wherever the summer season brings you, stay connected in your church community and continue worshipping God in this season.

God's blessings to you all and I hope your shovels can get a few months of rest.





## PRAYER

### Take Things As They Come

Margie Guelker, Visitation Pastor

*"For everything there is a season, and a time for every matter under heaven." Ecclesiastes 3:1*

I find great comfort in these verses in Ecclesiastes. When I read them, I am once again called to slow down and take things as they come knowing that Jesus holds all things in his hands.

Lately our seasons seem to be a little amiss. I'm writing this on April 18th after yet another bout of snow. Shouldn't the trees be budding out and the flowers pushing through the dirt? As my neighbor and I were doing a little clean up several days ago, he said, "Look, Marge, your maple is budding out!" And it was. Yes, spring might be a little late by our calculations, but the Creator has a plan and slowly, slowly the buds are appearing, whether I can see them fully or not!

But still it seems that we must wait a bit. What is it for which you wait? A phone call or note from a friend? The tulips? Reconciliation with one from whom you are estranged? A diagnosis?

Know this. Jesus is way ahead of you and is preparing you for what is to come, as beautiful or difficult as it may be. And Jesus will walk with you and give you what you need for the time when it finally arrives.

I will close with the hope we find in verse four: . . . a time to weep, and a time to laugh; a time to mourn, and a time to dance; . . ."

Blessings as you enjoy the glories of springtime, whenever they arrive!

TAKE  
things  
as they  
COME

# THANKS & JOY

## Let Us Sing

Connie Yerigan, *Director of Children, Youth & Family Ministries*

*"I will give thanks to you, O Lord, among the peoples, and I will sing praises to you among the nations."  
Psalm 108:3*

Grace and peace to you on this beautiful spring day! Ok...as I write this it's 37 degrees out and cloudy but it is a beautiful day nonetheless. It is a day that God has made, and I am grateful.

I like to ask my youth to share their highs, lows, and God moments from the past day or week. I explain that God moments are where they have seen or experienced God. On the gloomiest of days, I encourage them to look around, they will see God at work. When the news stories are sad or negative, I encourage them to look closely for where God is. God is in the examples of new life or animals around us...and in the sad times, God is in the ones lending a hand to help those in need. If we truly take the time to recognize where God is, then we can fully sing His praises.

Around the church on any given day, it's easy to see where God is. If we sit back and look around, our St. Philip's family is God at work. From the beautiful music on a Sunday morning, to the generosity in supporting many ministries including our Children & Youth program; I give thanks to God.

I give thanks to God for the chance to journey with eight children as they attended class and received their First Communion on Maundy Thursday this year. What a blessing they are. I give thanks to God and sing His praises for this calling to work at such an amazing place. I am excited to announce that I have been promoted to full time! I look forward to continuing to serve the wonderful families of our congregation. Thank you for your support of me in ministry.

I also give thanks to God that y'all love cinnamon rolls! Our Palm Sunday cinnamon roll sale was another huge success...we are planning another sale in May, doubling the batch, so be on the lookout for more information about this!

I encourage you to take time each day, or once a week to stop and look around or think back on where did you see God? If we truly take the time to recognize where God is, then we can fully sing His praises.

Blessings to you and yours.



# THANKS & SERVE

## Servants of the Lord

LaRae Kazmierkoski, President

As I tried to think of something to contribute this month, I thought of all the generosity displayed by this congregation. Our fundraiser for Ukraine far surpassed any goal we originally discussed, raising over \$11,000. Lutheran Disaster Relief will receive a generous donation with which to purchase supplies necessary for the Ukrainian people. After a long hiatus, our Disaster Relief Team is headed to Tennessee to help those whose homes were damaged by flooding. Many members give of their time and talents to spend time away from home helping those who desperately need assistance. Our Food & Clothing shelf continues to see new people coming for supplies and the number of people who get dinners from our Wednesday Community Supper grows. Our youth will travel to Nashville this summer to do mission work. We are the Lord's servants, and while I am sure there is room for improvement, we do a wonderful job of continuing to reach into the community. So, as I lament the delay of our warm weather and spring, I am warmed by thinking of all we do at St Philip's. Thank you all, and God's blessings to you!

## Board of Administration Highlights



- SPDR team thrilled about first disaster relief trip in two years as they head to Waverly, TN, this month to work on flood damaged homes
- Communion at the rail on first Sundays of the month. Communion stations on other Sundays
- Very successful fundraiser for Ukraine
- On Easter Sunday, a total of 330 people worshipped in person at the two services.
- Sunday volunteers—readers and communion servers are coming back.
- Part-time positions are being filled.

## Save the Date - 2022 Spring Clean-Up

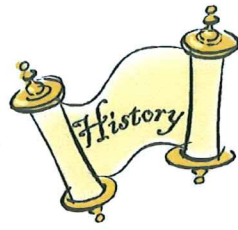
It has been a long winter, but spring is finally making its way here and it's time to get the church grounds in shape for the summer! Please join us Saturday, May 21 from 8:30 am – 1:00 pm, as we get together to spruce up the church and grounds by weeding, raking, edging, etc. We will start the day with coffee, pastries, and receive instructions in the Lounge, so please park by Door 2. Please also bring the tools you will use such as: wheelbarrow, shovels, leaf blowers, axes, rakes, trowels, and gloves. Also, mark your tools so you can identify them. Please contact Katie with questions [KatieS@splcmn.org]. We hope to see you on May 21.





## THANKS & SERVE

### Heritage Group



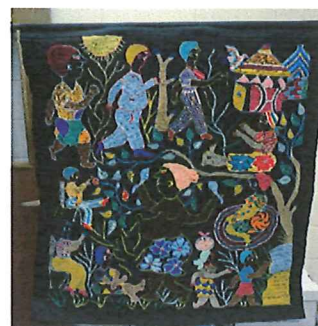
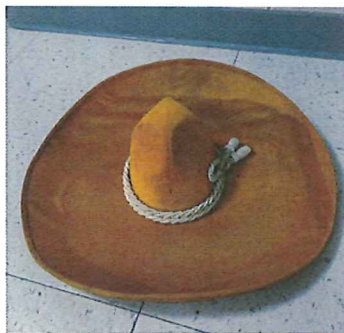
The Heritage Group is thankful for the information received regarding last month's History Mystery featuring two pieces of Hmong artwork.

As we continue to learn more about these two items, we will share that information with you in future newsletters. Stay tuned!

This month we are looking for help on two more items. Item #1 is a large, gold sombrero. Item #2 is a wall hanging – black background with a design created using crewel embroidery.

We appreciate any help in identifying who donated these items, where they may have come from, and how they have been used in the past.

The Heritage Group thanks you in advance for any help you can give us! Please send any comments or questions to Richard Lekang [richardlekang@comcast.net], Carol Anderson [caa0204@aol.com], or Kathy Swenson [kathyaswenson@outlook.com].



## Mark Your Calendar - 25th Annual Garage Sale

Planning for the St. Philip's garage sale is well under way - and the sale is just over three months away now! Watch for news later this spring about some special things we are planning for the 25th Anniversary Sale! Important dates to know:

- 2022 Garage Sale dates are: Wednesday - Saturday, August 17 - 20, 2022
- Donation drop-offs begin Friday, August 5. Please hold onto your gently used items until then, as no early donation drop-offs can be accepted.



## PRAYER & SERVE

### Spring Trip St. Philip's Disaster Relief



In August 2021, heavy rainfall, creek and overland flooding caused damage and destruction to the town of Waverly, TN. Waverly has a population of about 4,000 people and is located 80 miles west of Nashville, TN. Up to 20 inches of rainfall fell in the Waverly area in five hours, causing flooding that destroyed homes and killed 20 residents including a 7-month-old set of twins.

From May 6 - May 14, a 14 - member SPDR Team will travel to Waverly, TN to assist the survivors in the process of rebuilding their homes and lives. The SPDR ministry is working in partnership with the ELCA Southeast Synod/LDR, Inspiritus, UMCOR, and several local agencies. While in Waverly, the team will reside at the Waverly United Methodist Church.

Follow the team through their daily updates posted on St. Philip's webpage [[www.splcmn.org/spdr](http://www.splcmn.org/spdr)] or on the SPDR Facebook page (search Facebook for St. Philip's Disaster Relief - you don't need a Facebook account for this.)

Thank you for your continued support over the past 16 years. We are able to continue our work of recovery assistance because of your generosity and prayers.

## The Journey Continues

### Food & Clothing Shelf

In the Food & Clothing Shelf 2021 Annual Report, we mentioned that we were starting the year with a much needed healthy balance in our account. In subsequent monthly reports to the Board of Administration, we continue to report on our monthly efforts. We had been anticipating sharp increases in visitors and we now see this happening. In January, 49 families visited, in February, 70 families visited, and in March, 110 families visited. That is a 224.48% increase since January.

We continue to see many families visiting for the first time (21 in March). In March we distributed 3,620 pounds of food and 451 pounds of clothing. We give thanks for our financial position and the continued generosity of St. Philip's necessary to allow the Food & Clothing Shelf to meet the increasing needs of the hungry, thirsty, and those in need of clothing. We continue to give thanks for your donations.

The F&CS will be closed Memorial Day - Monday, May 30.

## Until All Are Fed . . . And Clothed



## THANKS & SERVE

### SPDR Project - “Ready to Roll Books” St. Philip’s Disaster Relief

Earlier this year, seeds were sown by Pastor Deb Grant whose church and congregation members were impacted by Hurricane Harvey in 2017. Pastor Deb stated, “Children’s books have a direct connection to health. Children in disasters are particularly vulnerable. Books, in hand, read by caregivers make a difference in their resiliency and ability to learn. People in evacuation centers, because of fire or flood, don’t have children’s books. People displaced don’t have resources for children’s books.”

Those seeds have grown into a new SPDR project called, “Ready to Roll Books,” providing portable libraries of children’s books ready to be deployed to evacuation centers, disaster shelters, disaster distribution centers, long term recovery groups, disaster assistance centers, etc. , during or following a disaster.

A “Ready to Roll Books” library will consist of a wheeled carry-on with a custom-made shelf unit inside. It will be filled with 50+ assorted books for children. The books will range from board books for infants/toddlers to chapter books for young readers. Once deployed, the books will be available for caregivers to read to children and the children will be able to keep some of the books if they want.

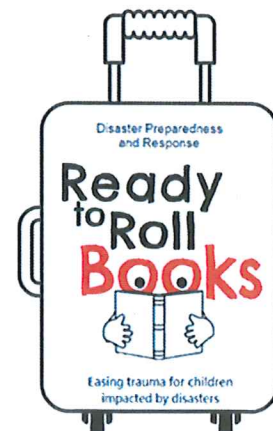
Rev. Chris Markert, the Texas-Louisiana Gulf Coast Synod Bishop’s Associate for Mission (including disaster response) is very enthused with this project as it fits well into some of the disaster response initiatives they are developing. So, for the pilot program, 10 - 15 “Ready to Roll Books” libraries will be supplied by SPDR to the Gulf Coast Synod.

With hurricane season officially starting June 1 (and the most active months being mid-August through mid-October), we want to get rolling (pun intended) on this project and could use your help with the following:

- Donate *new or gently used books*. Due to the size of the carry-ons, 9”x 9” or smaller books are preferred.
- Donate a *wheeled carry-on* that is in good condition with working wheels, main zipper, handle, etc.

Books can be left in the “Ready to Roll Books” bins located in the Narthex and near Door 2 and carry-ons can be left next to the bins. Any books or carry-ons that can’t be used for this project will be donated to St. Philip’s Garage Sale.

Thank you in advance for helping children impacted by disasters.



# PRAYER & THANKS

## Financials

St. Philip's 2022	Actual March	Actual YTD
Income	\$54,486.60	\$189,485.32
Expense	(\$64,088.08)	(\$179,356.24)
TOTALS	(\$9,601.48)	\$10,129.08

## Endowment Committee



### *The St. Philip's Endowment Fund*

#### *2021 Endowment Grants*

Kaitlyn Davies: \$1,000

Paige Gondorchin: \$1,000

Community Supper: \$1,000

Library: \$60

Property & Grounds: \$2,500

(Replace Furniture by Door 2)

Property & Grounds: \$500

(Reconstruct Sewer Pipe in Parking Lot)

Property & Grounds: \$5,380

(Install Handicap Accessible Ramp by Door 3)

Sanctuary Choir: \$4,000

(Partial Cost of Chair Lift)

Sanctuary Decorating Team: \$1,000

*Thank you for your support!*



May

Gloria and Leslie Coleman on 5/9/1959 for 63 years  
Clarence and Constance Asche on 5/30/1960 for 62 years  
Tom and Marlene Schonebaum on 5/19/1962 for 60 years  
Ken and Doris Moxness on 5/9/1970 for 52 years  
Ed and Sharon Aune on 5/22/1971 for 51 years  
John and Bonnie Shelton on 5/24/1975 for 47 years  
Michael and Deborah Carroll on 5/19/1979 for 43 years  
Jon and Mary Johnson on 5/9/1981 for 41 years  
Tom and Kara Ruwart on 5/15/1982 for 40 years  
Jonathan and Neoma Haugan on 5/26/1984 for 38 years  
Thomas and Jill Kaufhold on 5/26/1984 for 38 years  
Dan and Patty Porter on 5/19/1984 for 38 years  
Scott and Sandy Long on 5/18/1985 for 37 years  
David and Christa Pullen on 5/3/2003 for 19 years  
Shawn and Kari Pederson on 5/28/2006 for 16 years  
Ronda and Seth Bertsch on 5/31/2008 for 14 years  
Chad and Gina Munsterman on 5/10/2008 for 14 years  
Matthew and Stephanie Johnson on 5/3/2013 for 9 years  
Bryant and Melissa Holmstrom on 5/22/2015 for 7 years



*Hallie Christinanson*

*4/10/2022*

*Kinsley Roback*

*4/10/2022*



*The friends and family of:*

*George Dean*

*Beth Isely Eide*

*Ellen Hinrichs*

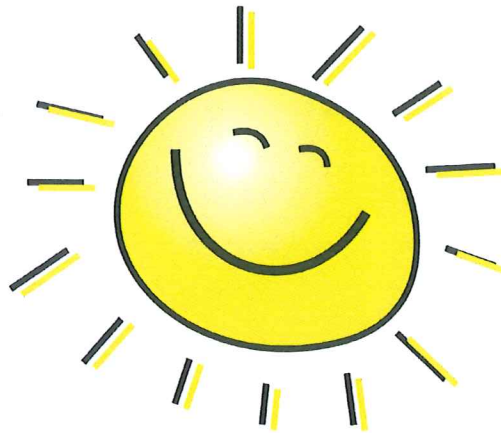
*Marietta Holum*



Thank you to all who called, sent texts/emails/cards, and prayed for me while I was recovering from my stroke. I really appreciate all of the caring! ~ Dee Blomster



## Friendly Takeaway



### St. Philip's Lutheran Church

A member of the ELCA

[www.splcmn.org](http://www.splcmn.org) ~ [info@splcmn.org](mailto:info@splcmn.org)

Phone: 763-571-1500 Fax: 763-572-2292

Pastoral Emergency Phone: 612-930-1588

### Church Staff

**Pastor Matt Flom, Pastor**

[MattF@splcmn.org](mailto:MattF@splcmn.org), ext. 112

**Eric Nelson, Associate Pastor**

[EricN@splcmn.org](mailto:EricN@splcmn.org), ext. 110

**Pastor Margie Guelker, Visitation Pastor**

[MargieG@splcmn.org](mailto:MargieG@splcmn.org)

**Katie Swenstad, Business Manager**

[KatieS@splcmn.org](mailto:KatieS@splcmn.org), ext. 104

**Jenni Anderson, Communications Director**

[JenniA@splcmn.org](mailto:JenniA@splcmn.org), ext. 101

**Jerry Salitros, Bookkeeper**

[JerryS@splcmn.org](mailto:JerryS@splcmn.org), ext. 106

**Connie Yerigan, Director of Children, Youth & Family Ministries**

[ConnieY@splcmn.org](mailto:ConnieY@splcmn.org), ext. 107

**Cheri Sykes, Worship Band Leader**

[CheriS@splcmn.org](mailto:CheriS@splcmn.org), ext. 103

**Michael Croy, Drummer**

[croy0001@umn.edu](mailto:croy0001@umn.edu)

**Adam Miller, Sanctuary Choir Director**

[AdamM@splcmn.org](mailto:AdamM@splcmn.org)

**Dawn Hansen, Bells of Praise Handbell Director**

[Dawng48@hotmail.com](mailto:Dawng48@hotmail.com)

**Jenn Marquardt, Nursery Ministry Worker**

[lilac1212@aol.com](mailto:lilac1212@aol.com)

**Michelle Hill, Part-Time Custodian**

**Everett Washington, Part-Time Custodian**

### Worship Schedule

9:00 am Traditional

10:30 am Contemporary

- Access worship livestreams on our website [[www.splcmn.org](http://www.splcmn.org)]
- Past worship links can be found on our website, E-News, and app
- Nursery is available Sundays: 9:30 - 11:30 am for children 3 months - 3 years

### Board of Administration

[BOA@splcmn.org](mailto:BOA@splcmn.org)

**LaRae Kazmierkoski, President**

[laraekaz@aol.com](mailto:laraekaz@aol.com)

**Brian Munsterman, Vice-President**

[bmunsterman@comcast.net](mailto:bmunsterman@comcast.net)

**Barbara Cooper, Secretary**

[cooperstory@msn.com](mailto:cooperstory@msn.com)

**Greg Rosholt, Treasurer**

[gsrosholt@comcast.net](mailto:gsrosholt@comcast.net)

**Mike Anderson**

[flooddog97@gmail.com](mailto:flooddog97@gmail.com)

**Kari Davies**

[karidavies73@gmail.com](mailto:karidavies73@gmail.com)

**Aaron Gondorchin**

[zebular@gmail.com](mailto:zebular@gmail.com)

**Terry Jeglosky**

[terryjeglosky@gmail.com](mailto:terryjeglosky@gmail.com)

**Dianne Lundeen**

[dianne@gndrg.com](mailto:dianne@gndrg.com)

**Kristine Poelzer**

[kpoelzer@msn.com](mailto:kpoelzer@msn.com)

**Missionaries: Jim & Carol Sack**

**Companion Congregation:**

**Bille Lutheran in Nigeria**

**Ministers: All members of the Parish**

# May 2022

SUNDAY	MONDAY	TUESDAY	WEDNESDAY	THURSDAY	FRIDAY	SATURDAY
<b>1</b> 9:00 am Worship 9:30 am Children & Youth Discipleship 10:30 am Worship	<b>2</b> 1:00 pm Food & Clothing Shelf; Joy Circle 7:00 pm Gambler Anonymous Mtg.;	<b>3</b> 10:00 am Staff Mtg.; Food & Clothing Shelf 1:00 pm Tuesdays Together 6:30 pm Prayer Group 7:30 pm Worship Band Rehearsal	<b>4</b> 8:30 am Men's Work Crew 9:00 am Quilters 10:00 am EA Mtg. 5:00 pm Food & Clothing Shelf 5:30 pm Community Supper 6:00 pm Sanctuary Choir Rehearsal 6:30 pm Bells Rehearsal; SPARK Generosity	<b>5</b> 7:30 pm AA Mtg.	<b>6</b> SPDR Team leaves for Waverly, TN 10:00 am Food & Clothing Shelf	<b>7</b>
<b>8</b> <b>Happy Mother's Day!</b> 9:00 am Worship 9:30 am Children & Youth Discipleship 10:30 am Worship	<b>9</b> 10:00 am Parish Fellowship Mtg. 1:00 pm Food & Clothing Shelf; Global Health Ministries 7:00 pm Gambler Anonymous Mtg.; Gam-Anon Mtg.	<b>10</b> 10:00 am Staff Mtg.; Food & Clothing Shelf 1:00 pm Tuesdays Together 2:00 pm Benevolence Committee Mtg. 2:30 pm Heritage Group Mtg. 6:30 pm Prayer Group 7:30 pm Worship Band Rehearsal	<b>11</b> 8:30 am Men's Work Crew; WOW 10:00 am EA Mtg.; Women's Book Club 1:00 pm Walking Alone Together 5:00 pm Food & Clothing Shelf 5:30 pm Community Supper 6:00 pm Sanctuary Choir Rehearsal 6:30 pm Bells Rehearsal	<b>12</b> 9:00 am Men's Book Discussion 7:30 pm AA Mtg.	<b>13</b> 10:00 am Food & Clothing Shelf	<b>14</b> SPDR Team returns from Waverly, TN
<b>15</b> <b>Music Sunday!</b> 9:00 am Worship 9:30 am Children & Youth Discipleship 10:00 am Youth Cinnamon Roll Sale 10:30 am Worship 11:30 am New Member Class	<b>16</b> <b>Friend Articles Due</b> 9:30 am Glory Circle 1:00 pm Food & Clothing Shelf 6:30 pm Executive Mtg. 7:00 pm Gambler Anonymous Mtg.;	<b>17</b> 9:00 am Library Mtg. 10:00 am Staff Mtg.; Food & Clothing Shelf 1:00 pm Tuesdays Together 6:30 pm Prayer Group 7:30 pm Worship Band Rehearsal	<b>18</b> 8:30 am Men's Work Crew 9:00 am Quilters 10:00 am EA Mtg. 10:30 am Property & Grounds Mtg. 5:00 pm Food & Clothing Shelf 5:30 pm Community Supper 6:00 pm Sanctuary Choir Rehearsal 6:30 pm SPARK Generosity	<b>19</b> 7:30 pm AA Mtg.	<b>20</b> 10:00 am Food & Clothing Shelf	<b>21</b> 8:30 am Spring Clean-up
<b>22</b> <b>Graduation Sunday!</b> 9:00 am Worship 9:30 am Children & Youth Discipleship 10:30 am Worship	<b>23</b> 1:00 pm Food & Clothing Shelf; Global Health Ministries 1:30 pm Knitters & Crocheters 6:30 pm Board of Administration Mtg. 7:00 pm Gambler Anonymous Mtg. Gam-Anon Mtg.	<b>24</b> 10:00 am Staff Mtg.; Food & Clothing Shelf 1:00 pm Tuesdays Together 6:30 pm Prayer Group 7:30 pm Worship Band Rehearsal	<b>25</b> 8:30 am Men's Work Crew; WOW 10:00 am EA Mtg. 5:00 pm Food & Clothing Shelf 5:30 pm Community Supper	<b>26</b> 9:00 am Men's Book Discussion 7:30 pm AA Mtg.	<b>27</b> 10:00 am Food & Clothing Shelf	<b>28</b>
<b>29</b> 9:00 am Worship 10:30 am Worship	<b>30</b> <b>Memorial Day</b> <b>Office Closed</b> <b>Food &amp; Clothing Shelf Closed</b> 7:00 pm Gambler Anonymous Mtg.	<b>31</b> 10:00 am Staff Mtg.; Food & Clothing Shelf 1:00 pm Tuesdays Together 6:30 pm Prayer Group 7:30 pm Worship Band Rehearsal				



6180 Highway 65 NE  
Fridley, MN 55432-5158

ADDRESS SERVICE REQUEST

**Mission:**

God calls us to receive and share God's  
love and grace with all people.

**Vision:**

With God's help, we will be joyful,  
compassionate and generous as we worship,  
grow and serve in community.

We invite and welcome those of every spiritual background, ethnicity,  
gender orientation, or economic situation. We are committed to our place  
within the Evangelical Lutheran Church in America (ELCA).