



# The Friend



All are welcome!



## March 2026

Welcome	1	Meals on Wheels	8
Pastor Matt's Column	2	Endowment Fund Grants	8
Faith Formation	3	Endowment Fund	8
President's Column	4	Financials	8
BOA Summary	4	Life Events	9
March Events	4	Friendly Takeaway	10
Festival of Tables	5	Contact Info	10
New Library Books	6	March Calendar	11
Library Open House	6	Mission & Vision	12
St. Philip's Disaster Relief	7		

# GROW & SERVE

## Holy Week & Easter

Matt Flom, Pastor

*8 A very large crowd spread their cloaks on the road, and others cut branches from the trees and spread them on the road. 9 The crowds that went ahead of him and that followed were shouting,*

*“Hosanna to the Son of David!*

*Blessed is the one who comes in the name of the Lord!*

*Hosanna in the highest heaven!”*

*Matt. 21:8-9*

Dear Sisters and Brothers in Christ Jesus,

Grace, love, and peace be to you from God our Father and our Lord and Savior Jesus Christ. As we travel our Lenten journey, we are headed towards Holy Week and Easter. The Sunday before Easter is always Palm Sunday or Passion Sunday. Why can it be either or both? Palm Sunday is about remembering Jesus' triumphal entry into Jerusalem. He rode a donkey into the city and the people spread clothes on the ground in front of him and waved palm branches. Some congregations also include Passion Sunday. They include texts and talk about the Last Supper and Jesus' arrest, trial, and crucifixion. These are the events that are called Holy Week. Churches that don't hold Holy Week services generally have Passion Sunday. Liturgical congregations, like St. Philip's, remember these events with an evening Maundy Thursday and a Good Friday service. Coming to Palm Sunday is how we kick off Holy Week, but if you don't go to Maundy Thursday and Good Friday, you miss so much of the context of Easter. We spend forty days getting ready for Easter, but it's not complete without these two services. Maundy Thursday is sometimes mispronounced "Monday" Thursday because people aren't familiar with its origin. Maundy comes from the Latin *mandatum*; which means a command and remembers Jesus giving his disciples a new commandment that they love each other as he has loved them. Our first communion students celebrate their first communion on Maundy Thursday. On Good Friday, our choir leads the service by performing a choir cantata. It is a beautiful and moving service that helps us to remember what Christ did for us on the cross. These are great opportunities to invite friends or relatives who have never been part of Holy Week services. Put them on your calendar today and we'll see you then.

God's Peace,

Pr. Matt

### Growing in Faith, Together

Connie Yerigan, *Director of Faith Formation*

*“Let us consider how we may spur one another on toward love and good deeds, not giving up meeting together...” Hebrews 10:24-25*

Grace and peace to you, dear St. Philip’s family.

As we journey through Lent, I’m reminded yet again how much our faith is exactly that...a journey. Not always a clear path. Not always a smooth path. But a path always held in the steady love of Christ. My prayer for you this season is that you find moments - in prayer, in worship, and in quiet acts of kindness - to reflect on all that Jesus has done for us...and to remember that you are deeply loved as a child of God.

There is so much happening in the life of our church.

Our children have been faithfully practicing for Palm Sunday, and I cannot wait for you to see them make their joyful entrance into worship, waving palms and sharing their music. There is something so powerful about watching young people lead us in praise.

Our youth are meeting weekly with their Lenten Mentors. Walking alongside each other in meaningful conversations about faith and vocation. First Communion classes are just around the corner, and it is such a gift to prepare our young people for that special milestone. If you feel a calling to connect, volunteer, or support our children and youth in any way, I would love to hear from you. Stay tuned for a really neat opportunity coming up that will offer an opportunity for intergenerational connections.

While we are fully present in this sacred season, we are also joyfully looking ahead. Mission Trip planning is underway. Vacation Bible School is in the works. Summer camp opportunities are taking shape. The calendar may be full, but what fills my heart most is seeing the relationships being built...across generations...as we grow together in faith.

Thank you for being a church that shows up...for worship, for mentoring, for volunteering, for encouraging, and for praying. We truly have so much to be grateful for at St. Philip’s.

May this season draw you closer to Christ. May you notice God’s presence in both the ordinary and the extraordinary...and may we continue to walk by faith...together.

# GROW & SERVE

## Spring is on the Horizon

Brian Munsterman, President

Well, the groundhog saw his shadow last month, so Winter isn't quite over yet... but soon Spring will be here! I am not sure about all of you, but I am ready for the snow to be gone, warmer weather, and seeing all the blooms of new growth. During the Lenten season, many people give up things. I am choosing to accept more. I am using this as a time to be more present with God's presence and to trust in Him. I am going to be intentional with my devotion and prayers. I believe our communities can still really use this right now. I see how much our congregation gives back to our community and feel really blessed by all that you do. I am blessed to be able to continue to give my time, talents and financial offerings to St. Philip's and our community. I hope you will join me in choosing to accept more. Blessings to all through this Lenten season and happy Spring!

## BOA Meeting Summary



- We welcomed Piklu Roy and Danielle Herrera-Markwald to the Board.
- In the spring the gaga ball pit will be moved from its current location near the sign to the area in back between the garage and kitchen.

## March Events

### *Lenten Worship*

Please join us for weekly Lenten Worship at 12:00 and 6:00 pm each Wednesday in the Fellowship Hall. You may also watch on our website's homepage [[www.splcmn.org](http://www.splcmn.org)] and YouTube channel [St. Philip's-Fridl]. We welcome folks to bring a bag lunch to eat as we gather in fellowship after the worship service. Whether you aren't able to make it to the evening service or need a break from work, come and join us!

### *Easter Flowers!*

Get ready to welcome spring with beautiful Easter flowers, now available for purchase in the church office! The plants will be used to decorate the Sanctuary on Easter Sunday! You may take home your plant after second service. Our partnership with Gertens ensures you'll receive top-notch plants. Flowers will also be for sale in the Mission Corner in between services on Sunday, March 8 and 15.

## More March Events



### *SPDR 20th Anniversary Celebration*

Be a part of the celebration of SPDR's 20 years of disaster relief ministry on Sunday, March 22! Enjoy a dinner and program with guest speakers (and more) at 4:00 pm. Tickets will be sold in the Mission Corner before and after both worship services on March 1 and March 8. Contact Renee at [612-202-1959] or Katie, in the church office, after March 1, to purchase tickets during the week. Tickets are \$15 for adults, \$8 for children 5-12, and free for under 5. The dinner includes salad, Olive Garden chicken parmigiana with breadsticks, beverages, and cake. Only 200 tickets will be sold - don't miss out!

### *First Communion Classes*

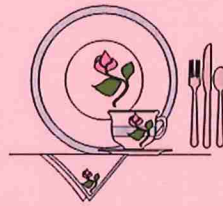
Our First Communion classes are just around the corner! Classes will be held Thursday, March 12, and March 19, from 6:30 - 7:30 pm in the Youth Room. If you have a child or know of a child ready and interested in receiving their First Communion, please visit our website or app to register them. You will find the registration link under the Children and Family tab and then click on First Communion classes. Contact Connie Yerigan at [ConnieY@splcmn.org] if you have any questions or for more information.

### *Senior Fair*

Join us as we partner with professionals from Miller Funeral Home & Crematory for a Senior Fair on the benefits of planning ahead on Saturday, March 14 from 10:00 am – 1:00 pm (lunch will be provided). Please RSVP to the office by March 10 [info@splcmn.org or 763-571-1500].

## Festival of Tables

### Parish Fellowship Committee



The 2026 Festival of Tables will be held on Saturday, April 18. The event begins at 11 am in the Fellowship Hall, where our guests will be able to enjoy the beautifully decorated theme tables. A delicious luncheon will be served at noon.

At 1 pm we move into the Sanctuary for our speaker, Doug Ohman, author, historian, photographer, and storyteller. Learn more about Doug at Pioneer Photography [www.PioneerPhotography.com].

Tickets for the event are \$20 per person and will be on sale between services on Sunday March 15 and Sunday March 22. Proceeds will benefit the St Philip's Food and Clothing Shelf and the Wednesday Night Community Suppers. Guests are encouraged to bring a non-perishable food item.

There are still opportunities to host and decorate a table. If interested, contact Julie Small by email at [kjsmall74@msn.com or leave a message at 763-767-2392]. Please join us for this lovely fundraiser!

# GROW & SERVE

## New Donor-Provided Books in the Library!

### Library Group

Members and friends of St. Philip's have recently donated materials for the church library. Group members are working to process the new arrivals and make them available for checkout. Stop in to find a new treasure.

#### Children's Books

*I Can't Believe They're Gone* by Karen Brough. A children's book about grief. The mouse family has lost someone dear and Wise Old Bear helps them understand what they are feeling. E / 152.4 /BRO

*Just Shine!* By U. S. Justice Sonia Sotomayor. Shows readers how helping others makes the whole world brighter. E / SOT

*Leo's Lunchbox* by Raphael G. Warnock, U.S. Senator (Alabama). Retelling the story of the Feeding of the 5,000. E/WAR

*The Right Thing to Do* by Joe Schmidt. Biography of Minnesota Twins catcher Joe Mauer. E/ 921/MAU

#### Religion

*The Bible, Simplified* by Zach Windahl. Understand the entire storyline of the Bible. 220 /WIN

*Think on These Things* by Ray Comfort. Wisdom for life from Proverbs. 223.7/Com

#### Nonfiction

*Coach Broyles' Playbook for Alzheimer's Caregivers*. Practical tips and guide. 616.8311/BRO

*A Few Nature Stories* by Lynette Thompson. Departed member leaves memories of events at the St. Philip's Garden. 635 / THO

*Grief Recovery for Teens* by Coral Popowitz. Practices to help deal with physical aspects of grief and loss. 152.4 POP

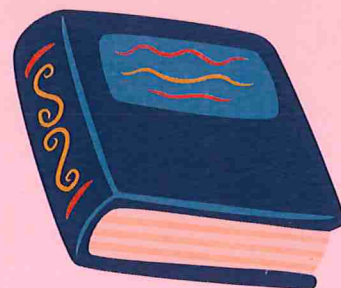
*Hurt, Help, Hope* by Clarissa Moll. Teen grief and life after loss. 155.93/MOL

*Something to Remember Me By*, by Susan Bosak. A celebration of the gift of love and of memories across generations. 305.26 / BOS

#### Adult Fiction

*Mad Honey* by Jodi Picoult. Family violence and abuse are part of a story of starting over. A suspense-filled tale of secrets and murder. FIC/PIC

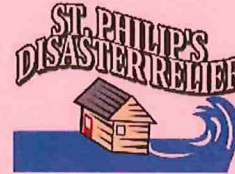
Come on in and check them out!



## Library Open House!

Join us for the Library Open House between services on April 12th in honor of National Library Month. We will have coffee and cookies, as well as free books to take home and to check out. All are welcome. Conversations with library members are included. We hope to see you there.

## 20th Anniversary Celebration & Spring Trip St. Philip's Disaster Relief



### *20th Anniversary Celebration*

St. Philip's Disaster Relief (SPDR) is celebrating its 20th Anniversary on Sunday, March 22. SPDR team members will be involved in both worship services and will be hosting a celebration dinner and program at 4:00 pm.

The dinner includes chicken parmigiana from Olive Garden (with a gluten free option available), salad, breadsticks, beverages, and cake. Tickets will be sold in the Mission Corner before and after both worship services on March 1 and March 8. (Contact Renee at 612-202-1959 or Katie, in the church office, to purchase tickets during the week.) Tickets are \$15 for adults, \$8 for children 5-12, and free for under 5. Only 200 tickets will be sold so don't miss out!

The program will include guest speakers who hosted SPDR teams at their churches and now have become team members and also a "history lesson" on how SPDR has been part of the lives of thousands of people impacted by natural disasters over the last twenty years.

### *Spring Trip*

The weeklong spring trip will be to Milwaukee, WI. The dates are Sunday, May 3 to Saturday, May 9. On August 8-9, 2025, much of the Milwaukee and surrounding suburbs received 7-10 inches of rain with a few areas receiving over 14 inches – which set a new statewide record for 24-hour precipitation. The flooding caused widespread damage to residential and commercial properties throughout Milwaukee and its suburbs, with over 1,800 homes reported as damaged or destroyed.

Registration for this trip will be sometime in early April. Watch for more information in emails and St. Philip's announcements. If you are interested in this trip, and aren't on the SPDR contact list, send an email to [spdr@splcmn.org] to get added to the list. As always, building skills aren't required. God doesn't call the qualified, He qualifies the called.

The journey continues...

# GROW & SERVE

## Meals on Wheels

How can it be March already? They say "Time flies when you are having fun"! It should say, "Time flies when you are giving of yourself to benefit others"! We deliver Meals on Wheels every 6-8 weeks. The 1-2 hours spent on a route comes and goes so quickly! The smiles and gratitude from the recipients of the meals lasts a long time. A big thank you to our drivers for March: Renee and Mike Youngberg, Cathy Callahan, Jennifer and Ron Prasek, Kathy and Chuck Eichelberger, Phyllis and Larry Ehlers, Monica Anderson, Sandy and Eldy Nelson.

## Endowment Fund Grant Requests

It is time for the Endowment Fund Grant Requests! This year we have \$24,830 to distribute. Grant request forms will be available in the office beginning March 8. All requests must be received in the office no later than Wednesday, April 15. Any questions, please see Katie in the office or contact Dawn Young, Committee Chair at [612-270-0326].

## Endowment Fund

### ***The St. Philip's Endowment Fund***

For more information on St. Philip's Endowment Fund visit our website at [[www.splcmn.org](http://www.splcmn.org)].  
Select the *Ministries* tab and click on *Endowment*.

**Gifts were received in memory and honor of**

Mike Anderson

Randee Arfmann

**Thank you for your support!**

## Financials

St. Philip's 2026	Actual January	Actual YTD
Income	\$50,358.77	\$50,358.77
Expense	(\$67,576.47)	(\$67,576.47)
TOTALS	(\$17,217.70)	(\$17,217.70)

Life Events



Howard and Shirley Mosman on 3/26/1955 for 71 years

Anne and Darrel Kudebeh on 3/17/1961 for 65 years

Wesley and Jeanine Grandstrand on 3/31/1973 for 53 years

Richard and Joan Kruse on 3/22/1975 for 51 years

Daniel and Heidi Eittreim on 3/2/1985 for 41 years

Rita Schwieters and Brian Leyendecker on 3/15/2020 for 6 years

Lucas and Sammantha Manners on 3/5/2021 for 5 years

*"May the road rise to meet you, May the wind be always at your back, May the sun shine warm upon your face, The rains fall soft upon your fields. And until we meet again, May God hold you in the palm of his hand".*

*- Irish Blessing*



## Friendly Takeaway



### St. Philip’s Lutheran Church

A member of the ELCA

[www.splcmn.org](http://www.splcmn.org) ~ [info@splcmn.org](mailto:info@splcmn.org)

Phone: 763-571-1500

Pastoral Emergency Phone: 763-571-1500

### Church Staff

#### Pastor Matt Flom, Pastor

[MattF@splcmn.org](mailto:MattF@splcmn.org), 763-231-0557

#### Pastor Darby Lawrence, Visitation Pastor

[DarbyL@splcmn.org](mailto:DarbyL@splcmn.org)

#### Katie Buettner Business Manager

[KatieS@splcmn.org](mailto:KatieS@splcmn.org), 763-231-0420

#### Jenni Anderson, Communications Director

[JenniA@splcmn.org](mailto:JenniA@splcmn.org), 763-231-0414

#### Jerry Salitros, Bookkeeper

[JerryS@splcmn.org](mailto:JerryS@splcmn.org), 763-231-0489

#### Connie Yerigan, Director of Faith Formation

[ConnieY@splcmn.org](mailto:ConnieY@splcmn.org), 763-231-0518

#### Cheri Sykes, Worship Band Leader

[CheriS@splcmn.org](mailto:CheriS@splcmn.org)

#### Curt Morales, Sanctuary Choir Director

[CurtM@splcmn.org](mailto:CurtM@splcmn.org)

#### Julie Lueck, Organist

[Julie@splcmn.org](mailto:Julie@splcmn.org)

#### Dawn Hansen, Bells of Praise Handbell Director

[Dawn48@hotmail.com](mailto:Dawn48@hotmail.com)

#### Rianna Swenstad, Nursery Ministry Worker

#### Companion Congregation:

Bille Lutheran in Nigeria

Ministers: All members of the Parish

### Worship Schedule

9:00 am Traditional

10:30 am Contemporary

- Access worship livestreams on our website [[www.splcmn.org](http://www.splcmn.org)]
- Past worship links can be found on our website, E-News, and app
- Nursery is available Sundays: 9:00 - 11:30 am for children 3 months - 3 years

#### Board of Administration

[BOA@splcmn.org](mailto:BOA@splcmn.org)

#### Brian Munsterman, President

[bmunsterman@comcast.net](mailto:bmunsterman@comcast.net)

#### Aaron Gondorchin, Vice-President

[zebular@gmail.com](mailto:zebular@gmail.com)

#### Kari Davies, Secretary

[karidavies73@gmail.com](mailto:karidavies73@gmail.com)

#### Greg Rosholt, Treasurer

[gsrosholt@comcast.net](mailto:gsrosholt@comcast.net)

#### Connie Bernardy

[conniebernardy@gmail.com](mailto:conniebernardy@gmail.com)

#### Dan Eittrheim

[dane@bsscinema.com](mailto:dane@bsscinema.com)

#### Danielle Herrera-Markwald

[daniella4207@hotmail.com](mailto:daniella4207@hotmail.com)

#### Piklu Roy

[pikluroy84@gmail.com](mailto:pikluroy84@gmail.com)

#### Rita Schwieters

[ritaschwieters87@gmail.com](mailto:ritaschwieters87@gmail.com)

#### Mike Youngberg

[zubazwizard@gmail.com](mailto:zubazwizard@gmail.com)

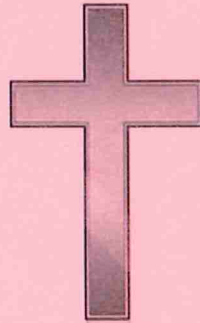
# March 2026

SUNDAY	MONDAY	TUESDAY	WEDNESDAY	THURSDAY	FRIDAY	SATURDAY
<p>1</p> <p><b>8:30 am</b> SPDR Celebration Ticket Sale</p> <p><b>9:00 am</b> Worship</p> <p><b>9:20 am</b> Children &amp; Youth Discipleship</p> <p><b>10:30 am</b> Worship</p>	<p>2</p> <p><b>1:00 pm</b> Joy Circle</p>	<p>3</p> <p><b>10:00 am</b> Staff Mtg.; Food &amp; Clothing Shelf</p> <p><b>1:00 pm</b> Tuesdays Together</p> <p><b>6:30 pm</b> Worship Band Rehearsal</p>	<p>4</p> <p><b>8:30 am</b> Men's Work Crew</p> <p><b>9:00 am</b> Quilters</p> <p><b>10:00 am</b> EA Mtg.</p> <p><b>12:00 pm</b> Lenten Worship</p> <p><b>5:00 pm</b> Food &amp; Clothing Shelf</p> <p><b>5:15 pm</b> Community Supper</p> <p><b>6:00 pm</b> Lenten Worship</p> <p><b>6:30 pm</b> Bells of Praise Rehearsal</p> <p><b>7:00 pm</b> Sanctuary Choir Rehearsal; Lutheran Vocation</p>	<p>5</p> <p><b>7:30 pm</b> AA Mtg.</p>	<p>6</p> <p><b>10:00 am</b> Food &amp; Clothing Shelf</p>	<p>7</p>
<p>8</p> <p><b>Daylight Savings Ends</b></p> <p><b>8:30 am</b> SPDR Celebration Ticket Sale; Easter Flower Sale</p> <p><b>9:00 am</b> Worship</p> <p><b>9:20 am</b> Children &amp; Youth Discipleship</p> <p><b>10:30 am</b> Worship</p>	<p>9</p> <p><b>10:00 am</b> Parish Fellowship Mtg.</p> <p><b>1:00 pm</b> Global Health Ministries</p>	<p>10</p> <p><b>10:00 am</b> Staff Mtg.; Food &amp; Clothing Shelf</p> <p><b>1:00 pm</b> Tuesdays Together</p> <p><b>2:00 pm</b> Heritage Group Mtg.; Benevolence Committee Mtg.</p> <p><b>6:30 pm</b> Worship Band Rehearsal</p>	<p>11</p> <p><b>8:30 am</b> Men's Work Crew; WOW</p> <p><b>10:00 am</b> EA Mtg.; Women's Book Club</p> <p><b>12:00 pm</b> Lenten Worship</p> <p><b>1:00 pm</b> Walking Alone Together</p> <p><b>5:00 pm</b> Food &amp; Clothing Shelf</p> <p><b>5:15 pm</b> Community Supper</p> <p><b>6:00 pm</b> Lenten Worship</p> <p><b>6:30 pm</b> Bells of Praise Rehearsal</p> <p><b>7:00 pm</b> Sanctuary Choir Rehearsal; Lutheran Vocation</p>	<p>12</p> <p><b>8:30 am</b> Men's Book Discussion</p> <p><b>6:30 pm</b> First Communion Class #1</p> <p><b>7:30 pm</b> AA Mtg.</p>	<p>13</p> <p><b>10:00 am</b> Food &amp; Clothing Shelf</p>	<p>14</p> <p><b>10:00 am</b> Senior Fair</p> <p><b>12:00 pm</b> Senior Fair Luncheon</p>
<p>15</p> <p><b>8:30 am</b> Easter Flower Sale</p> <p><b>9:00 am</b> Worship</p> <p><b>9:20 am</b> Children &amp; Youth Discipleship</p> <p><b>9:45 am</b> Festival of Tables Ticket Sale</p> <p><b>10:30 am</b> Worship</p>	<p>16</p> <p><b>Friend Articles Due</b></p> <p><b>10:00 am</b> Glory Circle</p> <p><b>6:30 pm</b> Executive Mtg.</p>	<p>17</p> <p><b>St. Patrick's Day</b></p> <p><b>9:00 am</b> Library Group</p> <p><b>10:00 am</b> Staff Mtg.; Food &amp; Clothing Shelf</p> <p><b>1:00 pm</b> Tuesdays Together</p> <p><b>6:30 pm</b> Worship Band Rehearsal</p> <p><b>7:00 pm</b> This is Most Certainly Brew</p>	<p>18</p> <p><b>8:30 am</b> Men's Work Crew</p> <p><b>9:00 am</b> Quilters</p> <p><b>10:00 am</b> EA Mtg.</p> <p><b>10:30 am</b> P&amp;G Mtg.</p> <p><b>12:00 pm</b> Lenten Worship</p> <p><b>5:00 pm</b> Food &amp; Clothing Shelf</p> <p><b>5:15 pm</b> Community Supper</p> <p><b>6:00 pm</b> Lenten Worship</p> <p><b>6:30 pm</b> Bells of Praise Rehearsal</p> <p><b>7:00 pm</b> Sanctuary Choir Rehearsal; Lutheran Vocation</p>	<p>19</p> <p><b>6:30 pm</b> First Communion Class #2</p> <p><b>7:30 pm</b> AA Mtg.</p>	<p>20</p> <p><b>10:00 am</b> Food &amp; Clothing Shelf</p>	<p>21</p>
<p>22</p> <p><b>9:00 am</b> Worship</p> <p><b>9:20 am</b> Children &amp; Youth Discipleship</p> <p><b>9:45 am</b> Festival of Tables Ticket Sale</p> <p><b>10:30 am</b> Worship</p> <p><b>4:00 pm</b> SPDR Celebration</p>	<p>23</p> <p><b>1:00 pm</b> Global Health Ministries; Knitters &amp; Crocheters</p> <p><b>6:30 pm</b> BOA Mtg.</p>	<p>24</p> <p><b>10:00 am</b> Staff Mtg.; Food &amp; Clothing Shelf</p> <p><b>1:00 pm</b> Tuesdays Together</p> <p><b>6:30 pm</b> Worship Band Rehearsal</p>	<p>25</p> <p><b>8:30 am</b> Men's Work Crew; WOW</p> <p><b>10:00 am</b> EA Mtg.</p> <p><b>12:00 pm</b> Lenten Worship</p> <p><b>5:00 pm</b> Food &amp; Clothing Shelf</p> <p><b>5:15 pm</b> Community Supper</p> <p><b>6:00 pm</b> Lenten Worship</p> <p><b>6:30 pm</b> Bells of Praise Rehearsal</p> <p><b>7:00 pm</b> Sanctuary Choir Rehearsal; Lutheran Vocation</p>	<p>26</p> <p><b>8:30 am</b> Men's Book Discussion</p> <p><b>7:30 pm</b> AA Mtg.</p>	<p>27</p> <p><b>10:00 am</b> Food &amp; Clothing Shelf</p>	<p>28</p>
<p>29</p> <p><b>Palm Sunday</b></p> <p><b>9:00 am</b> Worship</p> <p><b>9:20 am</b> Children &amp; Youth Discipleship</p> <p><b>9:45 am</b> Youth Cinnamon Roll Sale</p> <p><b>10:30 am</b> Worship</p>	<p>30</p>	<p>31</p> <p><b>10:00 am</b> Staff Mtg.; Food &amp; Clothing Shelf</p> <p><b>1:00 pm</b> Tuesdays Together</p> <p><b>6:30 pm</b> Worship Band Rehearsal</p>				



6180 Highway 65 NE  
Fridley, MN 55432-5158

ADDRESS SERVICE REQUEST



**Mission:**

God calls us to receive and share God's  
love and grace with all people.

**Vision:**

With God's help, we will be joyful,  
compassionate and generous as we worship,  
grow and serve in community.

We invite and welcome those of every spiritual background, ethnicity,  
gender orientation, or economic situation. We are committed to our place  
within the Evangelical Lutheran Church in America (ELCA).